

# Anti-MARK2 Antibody (R2Q82)

## Summary

---

<b>Catalog No.</b>	RHN72401
<b>Clone ID</b>	R2Q82
<b>Host species</b>	Rabbit
<b>Tested applications</b>	FCM: 1:20-1:100, WB: 1:1000-1:2000
<b>Species reactivity</b>	Human, Mouse, Rat
<b>Form</b>	Liquid
<b>Storage buffer</b>	0.01M PBS, pH 7.4, 0.05% BSA, 50% Glycerol, 0.05% Sodium azide.
<b>Concentration</b>	1 mg/ml
<b>Purity</b>	>95% by SDS-PAGE.
<b>Clonality</b>	Monoclonal
<b>Isotype</b>	IgG
<b>Applications</b>	FCM, WB
<b>Target</b>	ELKL motif kinase 1, EMK-1, MAP/microtubule affinity-regulating kinase 2, EMK1, PAR1 homolog b, MARK2, Par-1b, Par1b, Serine/threonine-protein kinase MARK2, PAR1 homolog
<b>Purification</b>	Protein A/G purified from cell culture supernatant.
<b>Endotoxin level</b>	Please contact with the lab for this information.
<b>Accession</b>	Q7KZI7

**Stability and Storage**

Use a manual defrost freezer and avoid repeated freeze thaw cycles. Store at 4 °C for frequent use. Store at -20 °C for twelve months from the date of receipt.

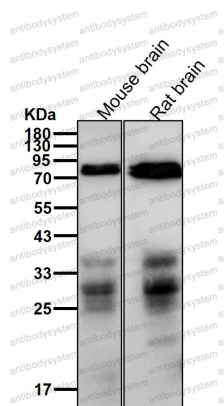
**Note**

For research use only.

**Data Image**

Western blot

Western blot analysis of MARK2 expression in Neuro-2a cell lysate.



Western blot

All lanes use the Antibody at 1:1K dilution for 1 hour at room temperature.