

# Anti-PNPLA2 Antibody (R2Q62)

## Summary

---

<b>Catalog No.</b>	RHN70702
<b>Clone ID</b>	R2Q62
<b>Host species</b>	Rabbit
<b>Tested applications</b>	WB: 1:500-1:1000
<b>Species reactivity</b>	Human, Mouse, Rat
<b>Form</b>	Liquid
<b>Storage buffer</b>	0.01M PBS, pH 7.4, 0.05% BSA, 50% Glycerol, 0.05% Sodium azide.
<b>Concentration</b>	1 mg/ml
<b>Purity</b>	>95% by SDS-PAGE.
<b>Clonality</b>	Monoclonal
<b>Isotype</b>	IgG
<b>Applications</b>	WB
<b>Target</b>	Adipose triglyceride lipase, Patatin-like phospholipase domain-containing protein 2, TTS2.2, TTS2, IPLA2-zeta, Transport-secretion protein 2, Calcium-independent phospholipase A2, ATGL, PNPLA2, Desnutrin, Pigment epithelium-derived factor
<b>Purification</b>	Protein A/G purified from cell culture supernatant.
<b>Endotoxin level</b>	Please contact with the lab for this information.
<b>Accession</b>	Q96AD5

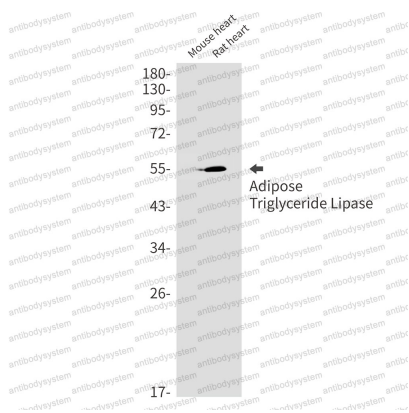
### Stability and Storage

Use a manual defrost freezer and avoid repeated freeze thaw cycles. Store at 4 °C for frequent use. Store at -20 °C for twelve months from the date of receipt.

### Note

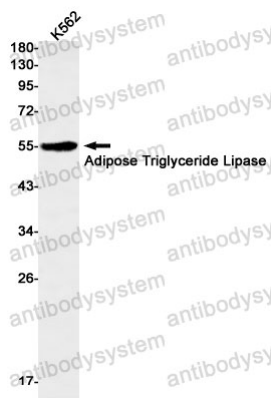
For research use only.

## Data Image



Western blot

Western blot analysis of Adipose Triglyceride Lipase in mouse heart, rat heart lysates using Adipose Triglyceride Lipase antibody.



Western blot

Western blot analysis of Adipose Triglyceride Lipase in K562 lysates using Adipose Triglyceride Lipase antibody.