

Anti-PNPLA2 Antibody (R2Q61)

Summary

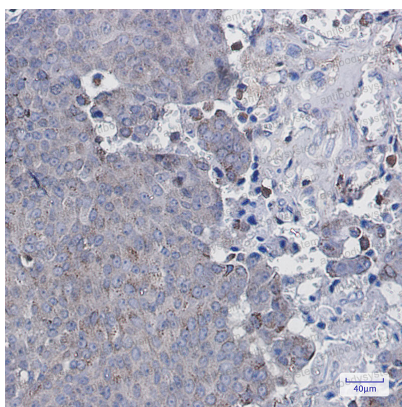
Catalog No.	RHN70704
Clone ID	R2Q61
Host species	Rabbit
Tested applications	IHC: 1:50-1:100, IP: 1:20, WB: 1:500-1:1000
Species reactivity	Human, Mouse, Rat
Form	Liquid
Storage buffer	0.01M PBS, pH 7.4, 0.05% BSA, 50% Glycerol, 0.05% Sodium azide.
Concentration	1 mg/ml
Purity	>95% by SDS-PAGE.
Clonality	Monoclonal
Isotype	IgG
Applications	IHC, IP, WB
Target	Adipose triglyceride lipase, Patatin-like phospholipase domain-containing protein 2, TTS2.2, TTS2, IPLA2-zeta, Transport-secretion protein 2, Calcium-independent phospholipase A2, ATGL, PNPLA2, Desnutrin, Pigment epithelium-derived factor
Purification	Protein A/G purified from cell culture supernatant.
Endotoxin level	Please contact with the lab for this information.
Accession	Q96AD5

Stability and Storage

Use a manual defrost freezer and avoid repeated freeze thaw cycles. Store at 4 °C for frequent use. Store at -20 °C for twelve months from the date of receipt.

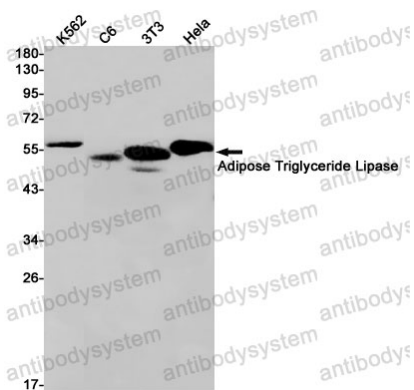
Note

For research use only.

Data Image

Immunohistochemical

Immunohistochemistry analysis of paraffin-embedded Human breast cancer using Adipose Triglyceride Lipase antibody. High-pressure and temperature Sodium Citrate pH 6.0 was used for antigen retrieval.



Western blot

Western blot analysis of Adipose Triglyceride Lipase in K562, C6, 3T3, HeLa lysates using Adipose Triglyceride Lipase antibody.