

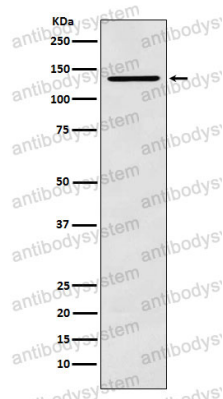
Anti-CARD11 Antibody (R2Q55)

Summary

Catalog No.	RHN70401
Clone ID	R2Q55
Host species	Rabbit
Tested applications	IF: 1:50-1:200, WB: 1:1000-1:2000
Species reactivity	Human, Mouse
Form	Liquid
Storage buffer	0.01M PBS, pH 7.4, 0.05% BSA, 50% Glycerol, 0.05% Sodium azide.
Concentration	1 mg/ml
Purity	>95% by SDS-PAGE.
Clonality	Monoclonal
Isotype	IgG
Applications	IF, WB
Target	Carma 1, CARMA1, CARD-containing MAGUK protein 1, CARD11, Caspase recruitment domain-containing protein 11
Purification	Protein A/G purified from cell culture supernatant.
Endotoxin level	Please contact with the lab for this information.
Accession	Q9BXL7
Stability and Storage	Use a manual defrost freezer and avoid repeated freeze thaw cycles. Store at 4 °C for frequent use. Store at -20 °C for twelve months from the date of receipt.

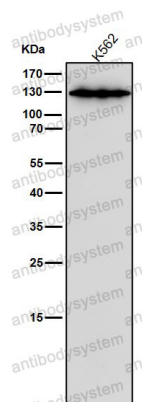
Note

For research use only.

Data Image

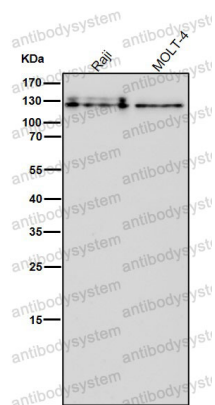
Western blot

Western blot analysis of CARD11 expression in K562 cell lysate.



Western blot

All lanes use the Antibody at 1:1K dilution for 1 hour at room temperature.



Western blot

All lanes use the Antibody at 1:1K dilution for 1 hour at room temperature.