

Anti-BAZ1B Antibody (R2Q46)

Summary

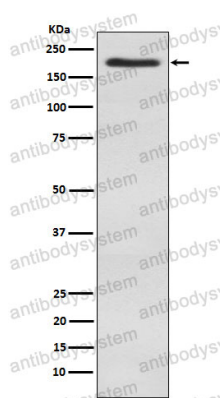
Catalog No.	RHN69801
Clone ID	R2Q46
Host species	Rabbit
Tested applications	FCM: 1:20-1:100, WB: 1:1000-1:2000
Species reactivity	Human, Mouse, Rat
Form	Liquid
Storage buffer	0.01M PBS, pH 7.4, 0.05% BSA, 50% Glycerol, 0.05% Sodium azide.
Concentration	1 mg/ml
Purity	>95% by SDS-PAGE.
Clonality	Monoclonal
Isotype	IgG
Applications	FCM, WB
Target	Williams-Beuren syndrome chromosomal region 10 protein, BAZ1B, hWALp2, Williams syndrome transcription factor, WBSC10, WBSCR10, Tyrosine-protein kinase BAZ1B, Williams-Beuren syndrome chromosomal region 9 protein, Bromodomain adjacent to zinc finger domain protein 1B, WSTF, WBSCR9
Purification	Protein A/G purified from cell culture supernatant.
Endotoxin level	Please contact with the lab for this information.
Accession	Q9UIG0

Stability and Storage

Use a manual defrost freezer and avoid repeated freeze thaw cycles. Store at 4 °C for frequent use. Store at -20 °C for twelve months from the date of receipt.

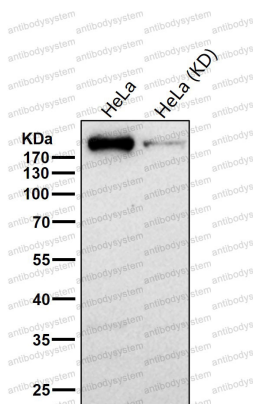
Note

For research use only.

Data Image

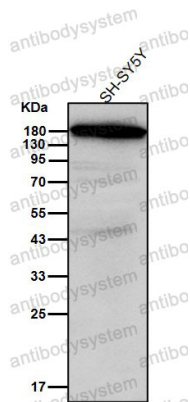
Western blot

Western blot analysis of WSTF expression in SH-SY5Y cell lysate.



Western blot

All lanes use the Antibody at 1:1K dilution for 1 hour at room temperature.



Western blot

All lanes use the Antibody at 1:2k dilution for 1 hour at room temperature.