

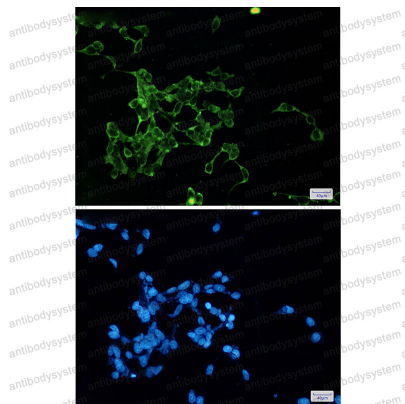
# Anti-WNT2B Antibody (R2Q26)

## Summary

---

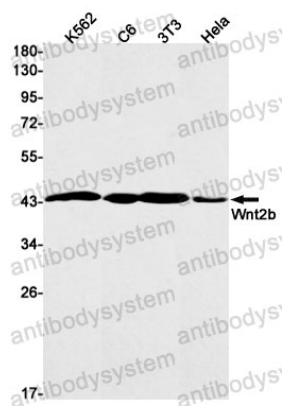
<b>Catalog No.</b>	RHN68101
<b>Clone ID</b>	R2Q26
<b>Host species</b>	Rabbit
<b>Tested applications</b>	IF: 1:50-1:200, WB: 1:500-1:1000
<b>Species reactivity</b>	Human, Mouse, Rat
<b>Form</b>	Liquid
<b>Storage buffer</b>	0.01M PBS, pH 7.4, 0.05% BSA, 50% Glycerol, 0.05% Sodium azide.
<b>Concentration</b>	1 mg/ml
<b>Purity</b>	>95% by SDS-PAGE.
<b>Clonality</b>	Monoclonal
<b>Isotype</b>	IgG
<b>Applications</b>	IF, WB
<b>Target</b>	WNT2B, Protein Wnt-2b, Protein Wnt-13, WNT13
<b>Purification</b>	Protein A/G purified from cell culture supernatant.
<b>Endotoxin level</b>	Please contact with the lab for this information.
<b>Accession</b>	Q93097
<b>Stability and Storage</b>	Use a manual defrost freezer and avoid repeated freeze thaw cycles. Store at 4 °C for frequent use. Store at -20 °C for twelve months from the date of receipt.
<b>Note</b>	For research use only.

## Data Image



Immunofluorescence

Immunocytochemistry analysis of Wnt2b (green) in 293t using Wnt2b antibody, and DAPI (blue).



Western blot

Western blot analysis of Wnt2b in K562, C6, 3T3, HeLa lysates using Wnt2b antibody.