

Anti-PARD6A Antibody (R2Q15)

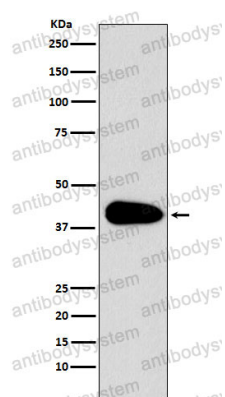
Summary

Catalog No.	RHN67301
Clone ID	R2Q15
Host species	Rabbit
Tested applications	IP: 1:20-1:50, WB: 1:1000-1:2000
Species reactivity	Human, Mouse, Rat
Form	Liquid
Storage buffer	0.01M PBS, pH 7.4, 0.05% BSA, 50% Glycerol, 0.05% Sodium azide.
Concentration	1 mg/ml
Purity	>95% by SDS-PAGE.
Clonality	Monoclonal
Isotype	IgG
Applications	IP, WB
Target	PARD6A, Partitioning defective 6 homolog alpha, PAR-6, PAR-6A, Tax interaction protein 40, PAR-6 alpha, PAR6C, PAR6A, TIP-40
Purification	Protein A/G purified from cell culture supernatant.
Endotoxin level	Please contact with the lab for this information.
Accession	Q9NPB6
Stability and Storage	Use a manual defrost freezer and avoid repeated freeze thaw cycles. Store at 4 °C for frequent use. Store at -20 °C for twelve months from the date of receipt.

Note

For research use only.

Data Image



Western blot

Western blot analysis of PAR6 expression in Jurkat cell lysate.