

Anti-ELOVL5 Antibody (R2Q06)

Summary

Catalog No.	RHN66501
Clone ID	R2Q06
Host species	Rabbit
Tested applications	IF: 1:50-1:200, WB: 1:500-1:1000
Species reactivity	Human
Form	Liquid
Storage buffer	0.01M PBS, pH 7.4, 0.05% BSA, 50% Glycerol, 0.05% Sodium azide.
Concentration	1 mg/ml
Purity	>95% by SDS-PAGE.
Clonality	Monoclonal
Isotype	IgG
Applications	IF, WB
Target	Very long chain 3-ketoacyl-CoA synthase 5, Very long chain 3-oxoacyl-CoA synthase 5, ELOVL2, ELOVL5, Fatty acid elongase 1, Elongation of very long chain fatty acids protein 5, hELO1, ELOVL fatty acid elongase 5, ELOVL FA elongase 5, 3-keto acyl-CoA synthase ELOVL5
Purification	Protein A/G purified from cell culture supernatant.
Endotoxin level	Please contact with the lab for this information.
Accession	Q9NYP7

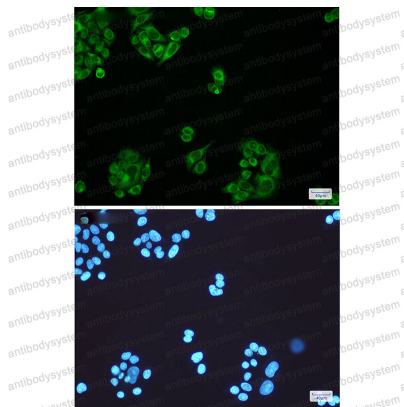
Recombinant Proteins & Antibodies

Stability and Storage

Use a manual defrost freezer and avoid repeated freeze thaw cycles. Store at 4 °C for frequent use. Store at -20 °C for twelve months from the date of receipt.

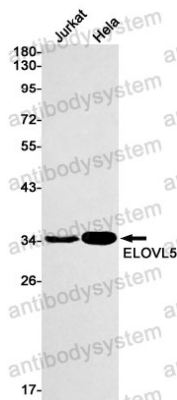
Note

For research use only.

Data Image

Immunofluorescence

Immunocytochemistry analysis of ELOVL5(green) in HeLa using ELOVL5 antibody, and DAPI(blue)



Western blot

Western blot analysis of ELOVL5 in Jurkat, HeLa lysates using ELOVL5 antibody.