

Anti-ELOVL5 Antibody (R2Q05)

Summary

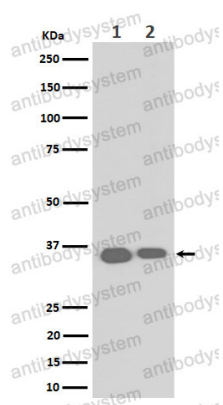
Catalog No.	RHN66502
Clone ID	R2Q05
Host species	Rabbit
Tested applications	IF: 1:50-1:200, WB: 1:1000-1:2000
Species reactivity	Human, Mouse, Rat
Form	Liquid
Storage buffer	0.01M PBS, pH 7.4, 0.05% BSA, 50% Glycerol, 0.05% Sodium azide.
Concentration	1 mg/ml
Purity	>95% by SDS-PAGE.
Clonality	Monoclonal
Isotype	IgG
Applications	IF, WB
Target	Very long chain 3-ketoacyl-CoA synthase 5, Very long chain 3-oxoacyl-CoA synthase 5, ELOVL2, ELOVL5, Fatty acid elongase 1, Elongation of very long chain fatty acids protein 5, hELO1, ELOVL fatty acid elongase 5, ELOVL FA elongase 5, 3-keto acyl-CoA synthase ELOVL5
Purification	Protein A/G purified from cell culture supernatant.
Endotoxin level	Please contact with the lab for this information.
Accession	Q9NYP7

Stability and Storage

Use a manual defrost freezer and avoid repeated freeze thaw cycles. Store at 4 °C for frequent use. Store at -20 °C for twelve months from the date of receipt.

Note

For research use only.

Data Image

Western blot

Western blot analysis of ELOVL5 expression in (1) HeLa cell lysate; (2) RAW 264.7 cell lysate.