

Anti-SRR Antibody (R2Q02)

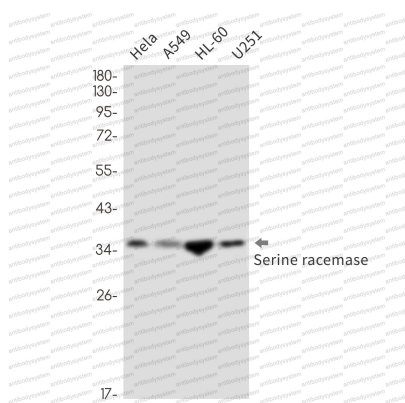
Summary

Catalog No.	RHN66301
Clone ID	R2Q02
Host species	Rabbit
Tested applications	IP: 1:20, WB: 1:500-1:1000
Species reactivity	Human
Form	Liquid
Storage buffer	0.01M PBS, pH 7.4, 0.05% BSA, 50% Glycerol, 0.05% Sodium azide.
Concentration	1 mg/ml
Purity	>95% by SDS-PAGE.
Clonality	Monoclonal
Isotype	IgG
Applications	IP, WB
Target	D-serine dehydratase, SRR, L-serine dehydratase, L-serine ammonia-lyase, D-serine ammonia-lyase, Serine racemase
Purification	Protein A/G purified from cell culture supernatant.
Endotoxin level	Please contact with the lab for this information.
Accession	Q9GZT4
Stability and Storage	Use a manual defrost freezer and avoid repeated freeze thaw cycles. Store at 4 °C for frequent use. Store at -20 °C for twelve months from the date of receipt.

Note

For research use only.

Data Image

**Western blot**

Western blot analysis of Serine racemase in HeLa, A549, HL-60, U251 lysates using Serine Racemase antibody.