

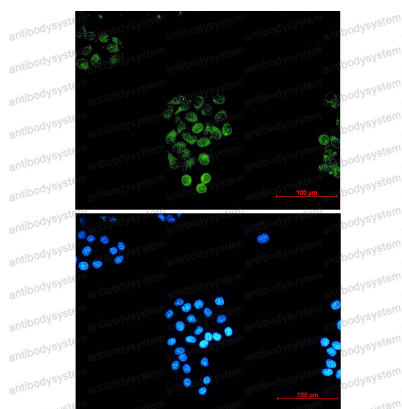
Anti-RASEF Antibody (R2P95)

Summary

Catalog No.	RHN66001
Clone ID	R2P95
Host species	Rabbit
Tested applications	IF: 1:50-1:200, WB: 1:500-1:1000
Species reactivity	Human, Mouse
Form	Liquid
Storage buffer	0.01M PBS, pH 7.4, 0.05% BSA, 50% Glycerol, 0.05% Sodium azide.
Concentration	1 mg/ml
Purity	>95% by SDS-PAGE.
Clonality	Monoclonal
Isotype	IgG
Applications	IF, WB
Target	RAB45, RASEF, Ras-related protein Rab-45, Ras and EF-hand domain-containing protein
Purification	Protein A/G purified from cell culture supernatant.
Endotoxin level	Please contact with the lab for this information.
Accession	Q8IZ41
Stability and Storage	Use a manual defrost freezer and avoid repeated freeze thaw cycles. Store at 4 °C for frequent use. Store at -20 °C for twelve months from the date of receipt.

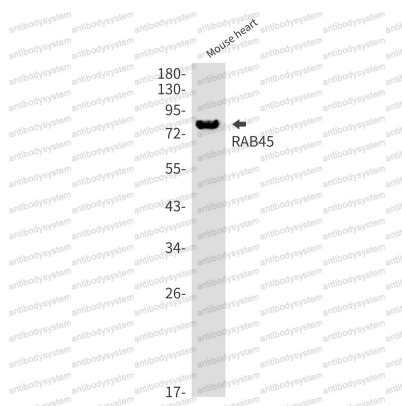
Note For research use only.

Data Image



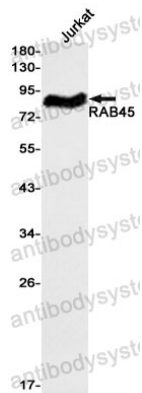
Immunofluorescence

Immunocytochemistry analysis of RAB45 (green) in Hela using RAB45 antibody, and DAPI (blue)



Western blot

Western blot analysis of RAB45 in mouse heart lysates using Rab45 antibody.



Western blot

Western blot analysis of RAB45 in Jurkat lysates using RAB45 antibody.