

Anti-SYNE3 Antibody (R2P91)

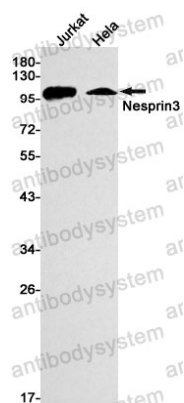
Summary

Catalog No.	RHN65801
Clone ID	R2P91
Host species	Rabbit
Tested applications	WB: 1:500-1:1000
Species reactivity	Human
Form	Liquid
Storage buffer	0.01M PBS, pH 7.4, 0.05% BSA, 50% Glycerol, 0.05% Sodium azide.
Concentration	1 mg/ml
Purity	>95% by SDS-PAGE.
Clonality	Monoclonal
Isotype	IgG
Applications	WB
Target	KASH3, KASH domain-containing protein 3, Nesprin-3, LINC00341, C14orf139, C14orf49, Nuclear envelope spectrin repeat protein 3, SYNE3
Purification	Protein A/G purified from cell culture supernatant.
Endotoxin level	Please contact with the lab for this information.
Accession	Q6ZMZ3
Stability and Storage	Use a manual defrost freezer and avoid repeated freeze thaw cycles. Store at 4 °C for frequent use. Store at -20 °C for twelve months from the date of receipt.

Note

For research use only.

Data Image



Western blot

Western blot analysis of Nesprin3 in Jurkat, HeLa lysates using Nesprin3 antibody.