

# Recombinant Mouse MIF/GIF Protein, N-His

## Summary

---

<b>Catalog No.</b>	YMD03401
<b>Alternative Names</b>	MIF, L-dopachrome isomerase, L-dopachrome tautomerase, GIF, Macrophage migration inhibitory factor, MMIF, Phenylpyruvate tautomerase, Glycosylation-inhibiting factor, GLIF
<b>Form</b>	Lyophilized
<b>Storage buffer</b>	Lyophilized from a 0.2 µm filtered solution of PBS, 0.02% Tween 80, 4.0% Mannitol, 4.0% Sucrose, pH7.4.
<b>Purity</b>	>80% as determined by SDS-PAGE.
<b>Applications</b>	ELISA, Immunogen, SDS-PAGE, WB, Bioactivity testing in progress
<b>Endotoxin level</b>	Please contact with the lab for this information.
<b>Expression system</b>	E. coli
<b>Accession</b>	P34884
<b>Protein length</b>	Met1-Ala115
<b>Nature</b>	Recombinant
<b>Predicted molecular weight</b>	14.67 kDa
<b>Stability and Storage</b>	Use a manual defrost freezer and avoid repeated freeze thaw cycles. Store at 2 to 8°C for frequent use. Store at -20 to -80°C for twelve months from the date of receipt.
<b>Reconstitution</b>	Reconstitute in sterile water for a stock solution.
<b>Species</b>	Mus musculus (Mouse)

**Shipping**

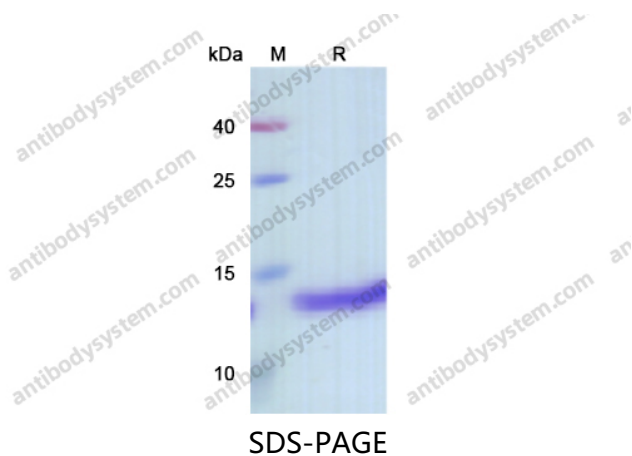
In general, proteins are provided as lyophilized powder/frozen liquid. They are shipped out with dry ice/blue ice unless customers require otherwise.

**Note**

For research use only.

## Data Image

---



SDS PAGE for recombinant Mouse MIF / GIF