

Anti-GNE Antibody (R2P65)

Summary

Catalog No.	RHN64601
Clone ID	R2P65
Host species	Rabbit
Tested applications	IP: 1:20, WB: 1:500-1:1000
Species reactivity	Human
Form	Liquid
Storage buffer	0.01M PBS, pH 7.4, 0.05% BSA, 50% Glycerol, 0.05% Sodium azide.
Concentration	1 mg/ml
Purity	>95% by SDS-PAGE.
Clonality	Monoclonal
Isotype	IgG
Applications	IP, WB
Target	Uridine diphosphate-N-acetylglucosamine-2-epimerase, Bifunctional UDP-N-acetylglucosamine 2-epimerase/N-acetylmannosamine kinase, UDP-GlcNAc-2-epimerase, UDP-GlcNAc-2-epimerase/ManAc kinase, GLCNE, GNE, ManAc kinase
Purification	Protein A/G purified from cell culture supernatant.
Endotoxin level	Please contact with the lab for this information.
Accession	Q9Y223

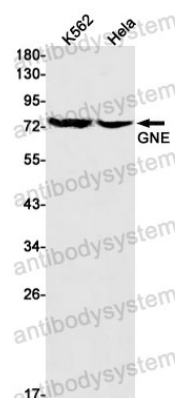
Stability and Storage

Use a manual defrost freezer and avoid repeated freeze thaw cycles. Store at 4 °C for frequent use. Store at -20 °C for twelve months from the date of receipt.

Note

For research use only.

Data Image



Western blot

Western blot analysis of GNE in K562, HeLa lysates using GNE antibody.