

Anti-HDHD5 Antibody (R2P61)

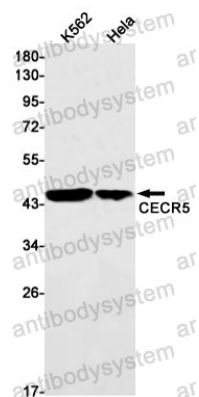
Summary

| | |
|------------------------------|---|
| Catalog No. | RHN64401 |
| Clone ID | R2P61 |
| Host species | Rabbit |
| Tested applications | IP: 1:20, WB: 1:500-1:1000 |
| Species reactivity | Human |
| Form | Liquid |
| Storage buffer | 0.01M PBS, pH 7.4, 0.05% BSA, 50% Glycerol, 0.05% Sodium azide. |
| Concentration | 1 mg/ml |
| Purity | >95% by SDS-PAGE. |
| Clonality | Monoclonal |
| Isotype | IgG |
| Applications | IP, WB |
| Target | HDHD5, Cat eye syndrome critical region protein 5, Haloacid dehalogenase-like hydrolase domain-containing 5, CECR5 |
| Purification | Protein A/G purified from cell culture supernatant. |
| Endotoxin level | Please contact with the lab for this information. |
| Accession | Q9BXW7 |
| Stability and Storage | Use a manual defrost freezer and avoid repeated freeze thaw cycles. Store at 4 °C for frequent use. Store at -20 °C for twelve months from the date of receipt. |

Note

For research use only.

Data Image



Western blot

Western blot analysis of CECR5 in K562, HeLa lysates using CECR5 antibody.