

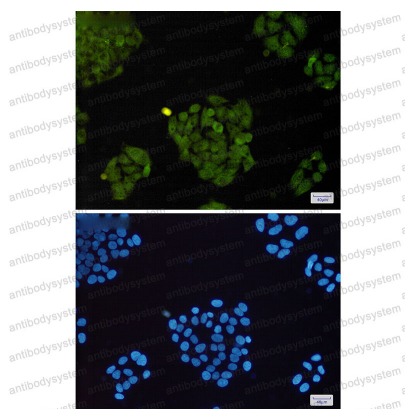
Anti-BRAT1 Antibody (R2P56)

Summary

Catalog No.	RHN64201
Clone ID	R2P56
Host species	Rabbit
Tested applications	IF: 1:50-1:200, IP: 1:20, WB: 1:500-1:1000
Species reactivity	Human
Form	Liquid
Storage buffer	0.01M PBS, pH 7.4, 0.05% BSA, 50% Glycerol, 0.05% Sodium azide.
Concentration	1 mg/ml
Purity	>95% by SDS-PAGE.
Clonality	Monoclonal
Isotype	IgG
Applications	IF, IP, WB
Target	BRAT1, BRCA1-associated protein required for ATM activation protein 1, C7orf27, BRCA1-associated ATM activator 1, BAAT1
Purification	Protein A/G purified from cell culture supernatant.
Endotoxin level	Please contact with the lab for this information.
Accession	Q6PJG6
Stability and Storage	Use a manual defrost freezer and avoid repeated freeze thaw cycles. Store at 4 °C for frequent use. Store at -20 °C for twelve months from the date of receipt.

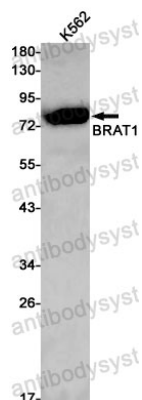
Note For research use only.

Data Image



Immunofluorescence

Immunocytochemistry analysis of BRAT1(green) in Hela using BRAT1 antibody, and DAPI(blue)



Western blot

Western blot analysis of BRAT1 in K562 lysates using BRAT1 antibody.