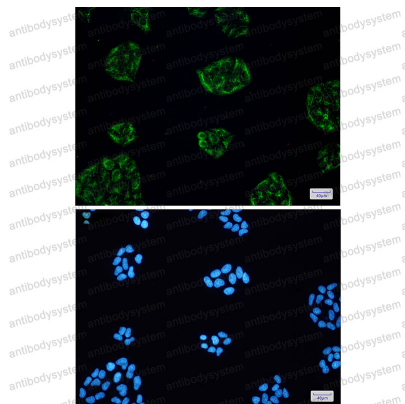


Anti-KCTD9 Antibody (R2P54)

Summary

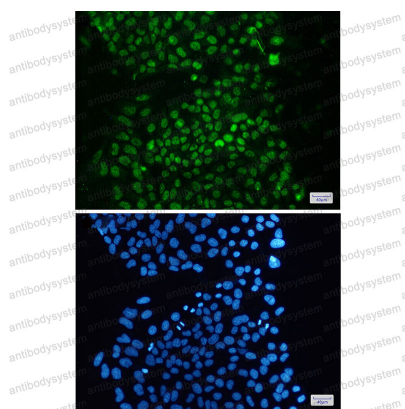
Catalog No.	RHN64101
Clone ID	R2P54
Host species	Rabbit
Tested applications	IF: 1:50-1:200, WB: 1:500-1:1000
Species reactivity	Human
Form	Liquid
Storage buffer	0.01M PBS, pH 7.4, 0.05% BSA, 50% Glycerol, 0.05% Sodium azide.
Concentration	1 mg/ml
Purity	>95% by SDS-PAGE.
Clonality	Monoclonal
Isotype	IgG
Applications	IF, WB
Target	KCTD9, BTB/POZ domain-containing protein KCTD9
Purification	Protein A/G purified from cell culture supernatant.
Endotoxin level	Please contact with the lab for this information.
Accession	Q7L273
Stability and Storage	Use a manual defrost freezer and avoid repeated freeze thaw cycles. Store at 4 °C for frequent use. Store at -20 °C for twelve months from the date of receipt.
Note	For research use only.

Data Image



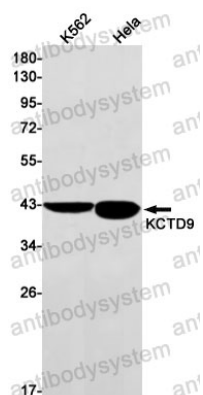
Immunofluorescence

Immunocytochemistry analysis of KCTD9(green) in Hela using KCTD9 antibody, and DAPI(blue)



Immunofluorescence

Immunocytochemistry analysis of KDM1/LSD1(green) in Hela using KDM1/LSD1 antibody, and DAPI(blue)



Western blot

Western blot analysis of KCTD9 in K562, Hela lysates using KCTD9 antibody.