

Anti-MS4A14 Antibody (R2P52)

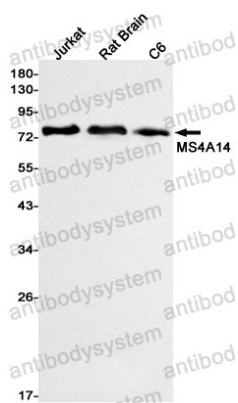
Summary

Catalog No.	RHN64001
Clone ID	R2P52
Host species	Rabbit
Tested applications	WB: 1:500-1:1000
Species reactivity	Human, Rat
Form	Liquid
Storage buffer	0.01M PBS, pH 7.4, 0.05% BSA, 50% Glycerol, 0.05% Sodium azide.
Concentration	1 mg/ml
Purity	>95% by SDS-PAGE.
Clonality	Monoclonal
Isotype	IgG
Applications	WB
Target	MS4A13, MS4A16, Testis development protein NYD-SP21, MS4A14, Membrane-spanning 4-domains subfamily A member 14
Purification	Protein A/G purified from cell culture supernatant.
Endotoxin level	Please contact with the lab for this information.
Accession	Q96JA4
Stability and Storage	Use a manual defrost freezer and avoid repeated freeze thaw cycles. Store at 4 °C for frequent use. Store at -20 °C for twelve months from the date of receipt.

Note

For research use only.

Data Image



Western blot

Western blot analysis of MS4A14 in Jurkat, rat Brain, C6 lysates using MS4A14 antibody.