

Anti-DTL Antibody (R2P47)

Summary

Catalog No.	RHN63702
Clone ID	R2P47
Host species	Rabbit
Tested applications	FCM: 1:20-1:100, IF: 1:50-1:200, IHC: 1:100-1:200, WB: 1:1000-1:2000
Species reactivity	Human, Mouse, Rat
Form	Liquid
Storage buffer	0.01M PBS, pH 7.4, 0.05% BSA, 50% Glycerol, 0.05% Sodium azide.
Concentration	1 mg/ml
Purity	>95% by SDS-PAGE.
Clonality	Monoclonal
Isotype	IgG
Applications	FCM, IF, IHC, WB
Target	DDB1- and CUL4-associated factor 2, DCAF2, CDW1, Lethal(2) denticleless protein homolog, RAMP, DTL, Retinoic acid-regulated nuclear matrix-associated protein, L2DTL, Denticleless protein homolog, CDT2
Purification	Protein A/G purified from cell culture supernatant.
Endotoxin level	Please contact with the lab for this information.
Accession	Q9NZJ0

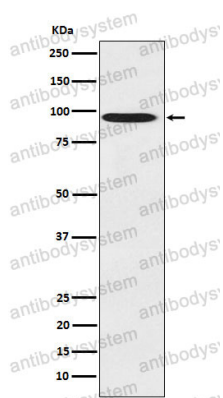
Stability and Storage

Use a manual defrost freezer and avoid repeated freeze thaw cycles. Store at 4 °C for frequent use. Store at -20 °C for twelve months from the date of receipt.

Note

For research use only.

Data Image



Western blot

Western blot analysis of CDT2 expression in 293T cell lysate.