

Anti-LPAR1 Antibody (R2P37)

Summary

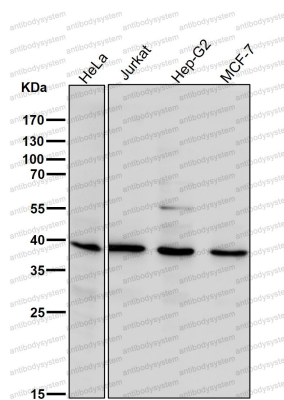
| | |
|----------------------------|--|
| Catalog No. | RHN63001 |
| Clone ID | R2P37 |
| Host species | Rabbit |
| Tested applications | FCM: 1:20-1:100, IF: 1:50-1:200, IHC: 1:100-1:200, IP: 1:20-1:50, WB: 1:1000-1:2000 |
| Species reactivity | Human |
| Form | Liquid |
| Storage buffer | 0.01M PBS, pH 7.4, 0.05% BSA, 50% Glycerol, 0.05% Sodium azide. |
| Concentration | 1 mg/ml |
| Purity | >95% by SDS-PAGE. |
| Clonality | Monoclonal |
| Isotype | IgG |
| Applications | FCM, IF, IHC, IP, WB |
| Target | EDG2, Lysophosphatidic acid receptor 1, LPAR1, Lysophosphatidic acid receptor Edg-2, LPA receptor 1, LPA-1, LPA1 |
| Purification | Protein A/G purified from cell culture supernatant. |
| Endotoxin level | Please contact with the lab for this information. |
| Accession | Q92633 |

Stability and Storage

Use a manual defrost freezer and avoid repeated freeze thaw cycles. Store at 4 °C for frequent use. Store at -20 °C for twelve months from the date of receipt.

Note

For research use only.

Data Image

Western blot

All lanes use the Antibody at 1:1K dilution for 1 hour at room temperature.



Western blot

Western blot analysis of EDG2 expression in A375 cell lysate.