

Anti-IKBKG Antibody (R2P26)

Summary

Catalog No.	RHN62001
Clone ID	R2P26
Host species	Rabbit
Tested applications	IF: 1:50-1:200, IP: 1:20, WB: 1:500-1:1000
Species reactivity	Human, Mouse, Rat
Form	Liquid
Storage buffer	0.01M PBS, pH 7.4, 0.05% BSA, 50% Glycerol, 0.05% Sodium azide.
Concentration	1 mg/ml
Purity	>95% by SDS-PAGE.
Clonality	Monoclonal
Isotype	IgG
Applications	IF, IP, WB
Target	Inhibitor of nuclear factor kappa-B kinase subunit gamma, NEMO, IKKAP1, IKK-gamma, Ikb kinase-associated protein 1, Ikb kinase subunit gamma, FIP-3, NF-kappa-B essential modifier, NF-kappa-B essential modulator, IKBKG, I-kappa-B kinase subunit gamma, FIP3, IKKG
Purification	Protein A/G purified from cell culture supernatant.
Endotoxin level	Please contact with the lab for this information.
Accession	Q9Y6K9

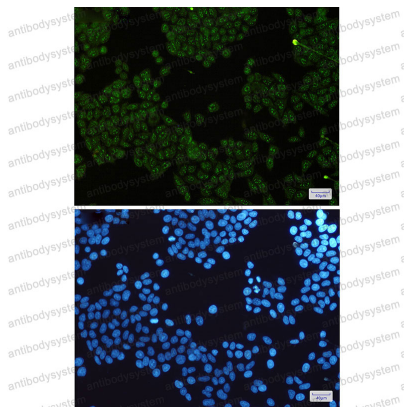
Stability and Storage

Use a manual defrost freezer and avoid repeated freeze thaw cycles. Store at 4 °C for frequent use. Store at -20 °C for twelve months from the date of receipt.

Note

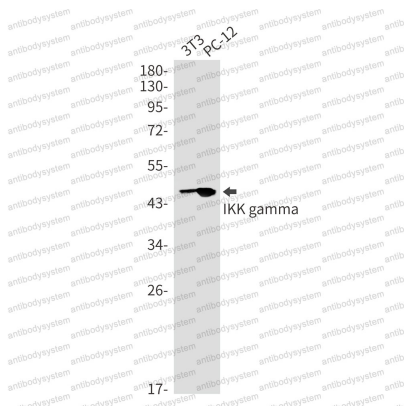
For research use only.

Data Image



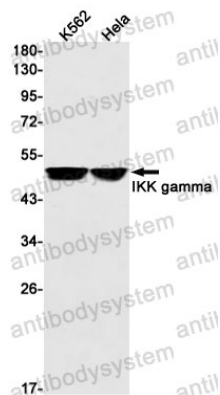
Immunofluorescence

Immunocytochemistry analysis of IKK gamma(green) in Hela using IKK gamma antibody, and DAPI(blue)



Western blot

Western blot analysis of IKK gamma in 3T3, PC-12 lysates using IKK gamma antibody.



Western blot

Western blot analysis of IKK gamma in K562, HeLa lysates using IKK gamma antibody.