

# Anti-IKBKG Antibody (R2P25)

## Summary

---

<b>Catalog No.</b>	RHN62002
<b>Clone ID</b>	R2P25
<b>Host species</b>	Rabbit
<b>Tested applications</b>	FCM: 1:20-1:100, IF: 1:50-1:200, IHC: 1:100-1:200, IP: 1:20-1:50, WB: 1:1000-1:2000
<b>Species reactivity</b>	Human, Mouse, Rat
<b>Form</b>	Liquid
<b>Storage buffer</b>	0.01M PBS, pH 7.4, 0.05% BSA, 50% Glycerol, 0.05% Sodium azide.
<b>Concentration</b>	1 mg/ml
<b>Purity</b>	>95% by SDS-PAGE.
<b>Clonality</b>	Monoclonal
<b>Isotype</b>	IgG
<b>Applications</b>	FCM, IF, IHC, IP, WB
<b>Target</b>	Inhibitor of nuclear factor kappa-B kinase subunit gamma, NEMO, IKKAP1, IKK-gamma, Ikb kinase-associated protein 1, Ikb kinase subunit gamma, FIP-3, NF-kappa-B essential modifier, NF-kappa-B essential modulator, IKBKG, I-kappa-B kinase subunit gamma, FIP3, IKKG
<b>Purification</b>	Protein A/G purified from cell culture supernatant.
<b>Endotoxin level</b>	Please contact with the lab for this information.
<b>Accession</b>	Q9Y6K9

## Recombinant Proteins &amp; Antibodies

**Stability and Storage**

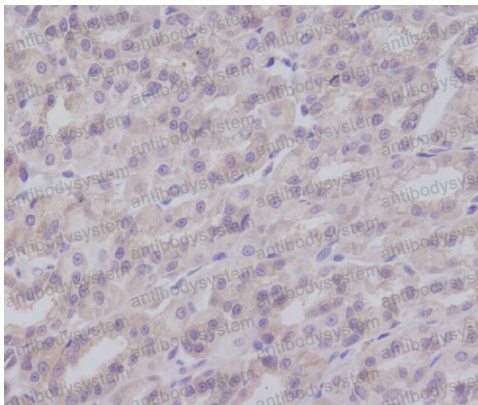
Use a manual defrost freezer and avoid repeated freeze thaw cycles. Store at 4 °C for frequent use. Store at -20 °C for twelve months from the date of receipt.

**Note**

For research use only.

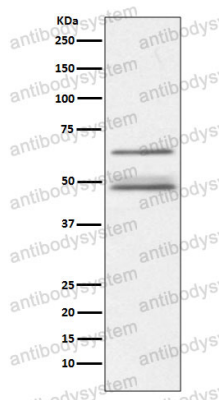
**Data Image**

---



Immunohistochemical analysis of paraffin-embedded mouse colon, using IKK gamma Antibody.

Immunohistochemical



Western blot analysis of IKK gamma expression in Jurkat cell lysate.

Western blot