

# Anti-AGO2 Antibody (R2P22)

## Summary

---

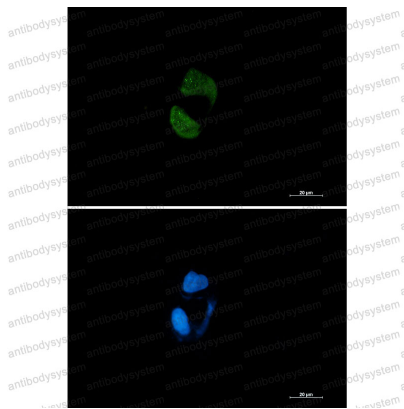
<b>Catalog No.</b>	RHN61801
<b>Clone ID</b>	R2P22
<b>Host species</b>	Rabbit
<b>Tested applications</b>	IF: 1:50-1:200, IP: 1:20, WB: 1:500-1:1000
<b>Species reactivity</b>	Human
<b>Form</b>	Liquid
<b>Storage buffer</b>	0.01M PBS, pH 7.4, 0.05% BSA, 50% Glycerol, 0.05% Sodium azide.
<b>Concentration</b>	1 mg/ml
<b>Purity</b>	>95% by SDS-PAGE.
<b>Clonality</b>	Monoclonal
<b>Isotype</b>	IgG
<b>Applications</b>	IF, IP, WB
<b>Target</b>	eIF2C 2, AGO2, EIF2C2, Protein argonaute-2, Argonaute RISC catalytic component 2, PPD, eIF-2C 2, Eukaryotic translation initiation factor 2C 2, Protein slicer, PAZ Piwi domain protein, Argonaute2, hAgo2
<b>Purification</b>	Protein A/G purified from cell culture supernatant.
<b>Endotoxin level</b>	Please contact with the lab for this information.
<b>Accession</b>	Q9UKV8

**Stability and Storage**

Use a manual defrost freezer and avoid repeated freeze thaw cycles. Store at 4 °C for frequent use. Store at -20 °C for twelve months from the date of receipt.

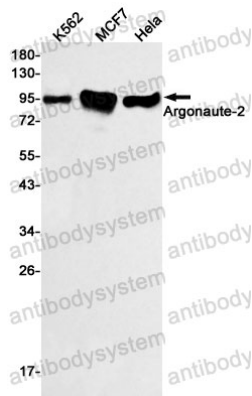
**Note**

For research use only.

**Data Image**

Immunofluorescence

Immunocytochemistry analysis of Argonaute 2 (green) in HCT116 using Argonaute 2 antibody, and DAPI(blue).



Western blot

Western blot analysis of Argonaute2 in K562, MCF-7, HeLa lysates using Argonaute2 antibody.