

Anti-TCF7L2 Antibody (R2P12)

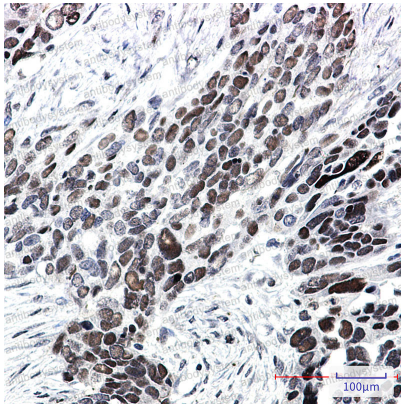
Summary

| | |
|------------------------------|---|
| Catalog No. | RHN60901 |
| Clone ID | R2P12 |
| Host species | Rabbit |
| Tested applications | IHC: 1:50-1:100, IP: 1:20, WB: 1:500-1:1000 |
| Species reactivity | Human |
| Form | Liquid |
| Storage buffer | 0.01M PBS, pH 7.4, 0.05% BSA, 50% Glycerol, 0.05% Sodium azide. |
| Concentration | 1 mg/ml |
| Purity | >95% by SDS-PAGE. |
| Clonality | Monoclonal |
| Isotype | IgG |
| Applications | IHC, IP, WB |
| Target | TCF-4, HMG box transcription factor 4, T-cell-specific transcription factor 4, Transcription factor 7-like 2, T-cell factor 4, hTCF-4, TCF4, TCF7L2 |
| Purification | Protein A/G purified from cell culture supernatant. |
| Endotoxin level | Please contact with the lab for this information. |
| Accession | Q9NQB0 |
| Stability and Storage | Use a manual defrost freezer and avoid repeated freeze thaw cycles. Store at 4 °C for frequent use. Store at -20 °C for twelve months from the date of receipt. |

Note

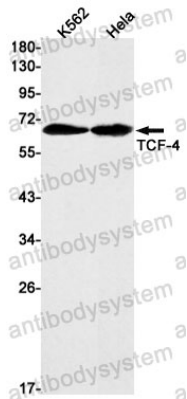
For research use only.

Data Image



Immunohistochemical

Immunohistochemistry analysis of paraffin-embedded Human Cholangiocarcinoma using TCF4 antibody. High-pressure and temperature Sodium Citrate pH 6.0 was used for antigen retrieval.



Western blot

Western blot analysis of TCF4 in K562, HeLa lysates using Transcription Factor 7 Like 2 antibody.