

Anti-PRPF19 Antibody (R2P07)

Summary

Catalog No.	RHN60501
Clone ID	R2P07
Host species	Rabbit
Tested applications	FCM: 1:20-1:100, IF: 1:50-1:200, IHC: 1:100-1:200, WB: 1:1000-1:2000
Species reactivity	Human, Mouse, Rat
Form	Liquid
Storage buffer	0.01M PBS, pH 7.4, 0.05% BSA, 50% Glycerol, 0.05% Sodium azide.
Concentration	1 mg/ml
Purity	>95% by SDS-PAGE.
Clonality	Monoclonal
Isotype	IgG
Applications	FCM, IF, IHC, WB
Target	PRP19/PSO4 homolog, SNEV, PRPF19, Nuclear matrix protein 200, Senescence evasion factor, RING-type E3 ubiquitin transferase PRP19, PRP19, hPso4, Pre-mRNA-processing factor 19, NMP200
Purification	Protein A/G purified from cell culture supernatant.
Endotoxin level	Please contact with the lab for this information.
Accession	Q9UMS4

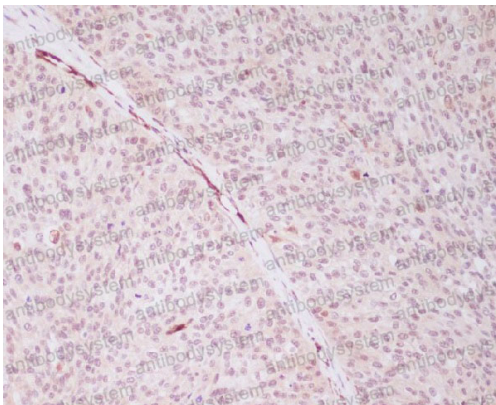
Recombinant Proteins & Antibodies

Stability and Storage

Use a manual defrost freezer and avoid repeated freeze thaw cycles. Store at 4 °C for frequent use. Store at -20 °C for twelve months from the date of receipt.

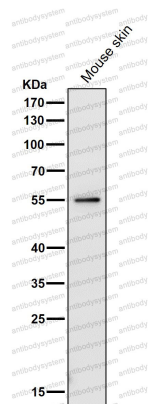
Note

For research use only.

Data Image

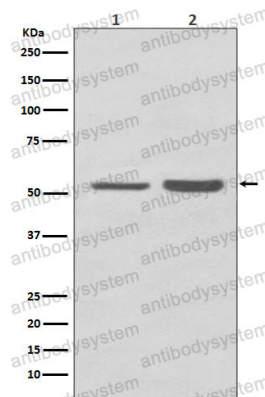
Immunohistochemical

Immunohistochemical analysis of paraffin-embedded human cervix cancer, using PRP19 Antibody.



Western blot

All lanes use the Antibody at 1:2K dilution for 1 hour at room temperature.



Western blot

Western blot analysis of PRP19 expression in (1) HepG2 cell lysate; (2) NIH/3T3 cell lysate.