

# Anti-CAMK2A Antibody (R2P06)

## Summary

---

<b>Catalog No.</b>	RHN59802
<b>Clone ID</b>	R2P06
<b>Host species</b>	Rabbit
<b>Tested applications</b>	WB: 1:500-1:1000
<b>Species reactivity</b>	Human, Mouse, Rat
<b>Form</b>	Liquid
<b>Storage buffer</b>	0.01M PBS, pH 7.4, 0.05% BSA, 50% Glycerol, 0.05% Sodium azide.
<b>Concentration</b>	1 mg/ml
<b>Purity</b>	>95% by SDS-PAGE.
<b>Clonality</b>	Monoclonal
<b>Isotype</b>	IgG
<b>Applications</b>	WB
<b>Target</b>	CAMK2A, KIAA0968, CaM kinase II subunit alpha, Calcium/calmodulin-dependent protein kinase type II subunit alpha, CaMK-II subunit alpha, CAMKA
<b>Purification</b>	Protein A/G purified from cell culture supernatant.
<b>Endotoxin level</b>	Please contact with the lab for this information.
<b>Accession</b>	Q9UQM7

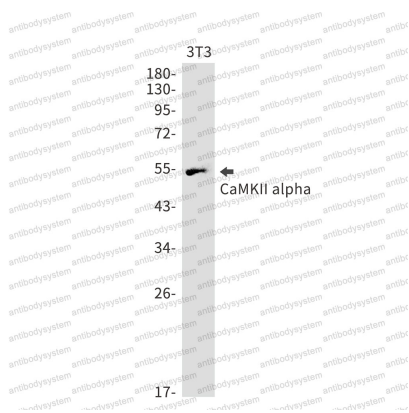
## Stability and Storage

Use a manual defrost freezer and avoid repeated freeze thaw cycles. Store at 4 °C for frequent use. Store at -20 °C for twelve months from the date of receipt.

## Note

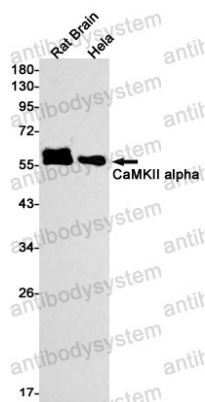
For research use only.

## Data Image



Western blot

Western blot analysis of CaMKII alpha in 3T3 lysates using CaMKII alpha antibody.



Western blot

Western blot analysis of CaMKII alpha in rat Brain, Hela lysates using CaMKII alpha antibody.