

# Anti-CAMK2A Antibody (R2P05)

## Summary

---

<b>Catalog No.</b>	RHN59805
<b>Clone ID</b>	R2P05
<b>Host species</b>	Rabbit
<b>Tested applications</b>	FCM: 1:20-1:100, WB: 1:1000-1:2000
<b>Species reactivity</b>	Human, Mouse, Rat
<b>Form</b>	Liquid
<b>Storage buffer</b>	0.01M PBS, pH 7.4, 0.05% BSA, 50% Glycerol, 0.05% Sodium azide.
<b>Concentration</b>	1 mg/ml
<b>Purity</b>	>95% by SDS-PAGE.
<b>Clonality</b>	Monoclonal
<b>Isotype</b>	IgG
<b>Applications</b>	FCM, WB
<b>Target</b>	Calcium/calmodulin dependent protein kinase II alpha, Calcium/calmodulin dependent protein kinase II beta, Calcium/calmodulin dependent protein kinase II delta, Calcium/calmodulin dependent protein kinase II gamma, CaM kinase II alpha, CaM kinase II, CaM kinase II beta, CaM kinase II delta, CaM kinase II gamma, CAMK2, Camk2a, CAMK2B, CAMK2D, CAMK2G, CAMKA, pan CaMKII
<b>Purification</b>	Protein A/G purified from cell culture supernatant.
<b>Endotoxin level</b>	Please contact with the lab for this information.

## Recombinant Proteins &amp; Antibodies

**Accession**

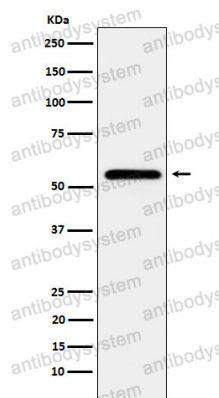
Q9UQM7, Q13554, Q13555, Q13557

**Stability and Storage**

Use a manual defrost freezer and avoid repeated freeze thaw cycles. Store at 4 °C for frequent use. Store at -20 °C for twelve months from the date of receipt.

**Note**

For research use only.

**Data Image**

Western blot

Western blot analysis of CaMKII expression in HeLa cell lysate.