

Anti-TPX2 Antibody (R2N88)

Summary

Catalog No.	RHN45701
Clone ID	R2N88
Host species	Rabbit
Tested applications	IF: 1:50-1:200, IHC: 1:50-1:100, IP: 1:20, WB: 1:500-1:1000
Species reactivity	Human
Form	Liquid
Storage buffer	0.01M PBS, pH 7.4, 0.05% BSA, 50% Glycerol, 0.05% Sodium azide.
Concentration	1 mg/ml
Purity	>95% by SDS-PAGE.
Clonality	Monoclonal
Isotype	IgG
Applications	IF, IHC, IP, WB
Target	C20orf2, Hepatocellular carcinoma-associated antigen 90, DIL-2, TPX2, Restricted expression proliferation-associated protein 100, Targeting protein for Xklp2, HCA519, Hepatocellular carcinoma-associated antigen 519, DIL2, Differentially expressed in cancerous and non-cancerous lung cells 2, Protein fls353, p100, C20orf1
Purification	Protein A/G purified from cell culture supernatant.
Endotoxin level	Please contact with the lab for this information.
Accession	Q9ULW0

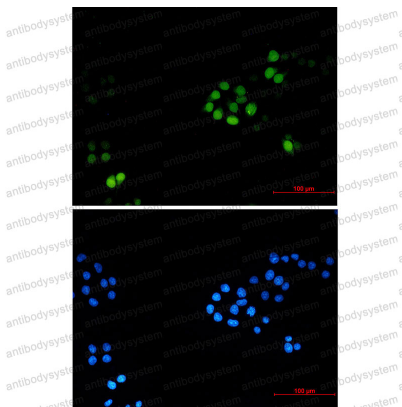
Stability and Storage

Use a manual defrost freezer and avoid repeated freeze thaw cycles. Store at 4 °C for frequent use. Store at -20 °C for twelve months from the date of receipt.

Note

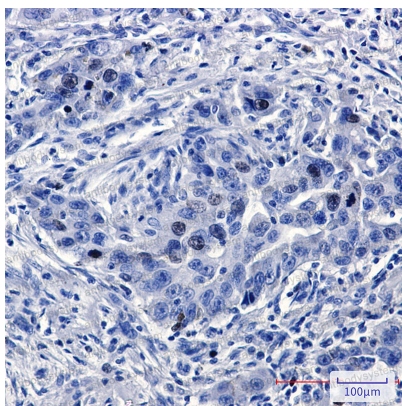
For research use only.

Data Image



Immunofluorescence

Immunocytochemistry analysis of TPX2 (green) in HeLa using TPX2 antibody, and DAPI (blue)



Immunohistochemical

Immunohistochemistry analysis of paraffin-embedded Human lung cancer using TPX2 antibody. High-pressure and temperature Sodium Citrate pH 6.0 was used for antigen retrieval.



Western blot

Western blot analysis of TPX2 in HeLa, A549, HL-60 lysates using TPX2 antibody.