

Anti-CELF1 Antibody (R2N69)

Summary

Catalog No.	RHN29802
Clone ID	R2N69
Host species	Rabbit
Tested applications	FCM: 1:20-1:100, IF: 1:50-1:200, IHC: 1:100-1:200, IP: 1:20-1:50, WB: 1:1000-1:2000
Species reactivity	Human, Mouse, Rat
Form	Liquid
Storage buffer	0.01M PBS, pH 7.4, 0.05% BSA, 50% Glycerol, 0.05% Sodium azide.
Concentration	1 mg/ml
Purity	>95% by SDS-PAGE.
Clonality	Monoclonal
Isotype	IgG
Applications	FCM, IF, IHC, IP, WB
Target	CELF-1, CUGBP1, CUGBP Elav-like family member 1, Deadenylation factor CUG-BP, Embryo deadenylation element-binding protein homolog, EDEN-BP homolog, CELF1, RNA-binding protein BRUNOL-2, 50 kDa nuclear polyadenylated RNA-binding protein, CUG triplet repeat RNA-binding protein 1, BRUNOL2, CUGBP, NAB50, CUG-BP- and ETR-3-like factor 1, Bruno-like protein 2, CUG-BP1
Purification	Protein A/G purified from cell culture supernatant.
Endotoxin level	Please contact with the lab for this information.

Recombinant Proteins & Antibodies

Accession

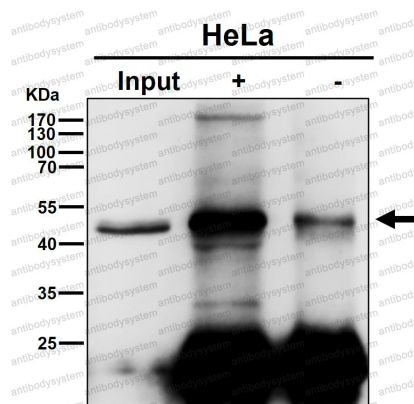
Q92879

Stability and Storage

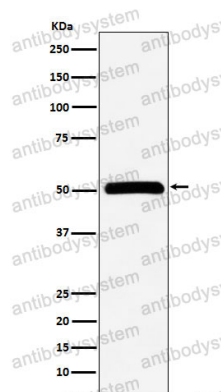
Use a manual defrost freezer and avoid repeated freeze thaw cycles. Store at 4 °C for frequent use. Store at -20 °C for twelve months from the date of receipt.

Note

For research use only.

Data Image**Immunoprecipitation**

Immunoprecipitate (IP) analysis using the Antibody at 1:50 dilution. (wb at 1:6K dilution)

**Western blot**

Western blot analysis of CUG-BP1 expression in HeLa cell lysate.