

Anti-GIT1 Antibody (R2N63)

Summary

Catalog No.	RHN23604
Clone ID	R2N63
Host species	Rabbit
Tested applications	FCM: 1:20-1:100, WB: 1:1000-1:2000
Species reactivity	Human, Mouse, Rat
Form	Liquid
Storage buffer	0.01M PBS, pH 7.4, 0.05% BSA, 50% Glycerol, 0.05% Sodium azide.
Concentration	1 mg/ml
Purity	>95% by SDS-PAGE.
Clonality	Monoclonal
Isotype	IgG
Applications	FCM, WB
Target	CAT1, CAT-1, GRK-interacting protein 1, ARF GTPase-activating protein GIT1, G protein-coupled receptor kinase-interactor 1, GIT1, ARF GAP GIT1, Cool-associated and tyrosine-phosphorylated protein 1
Purification	Protein A/G purified from cell culture supernatant.
Endotoxin level	Please contact with the lab for this information.
Accession	Q9Y2X7

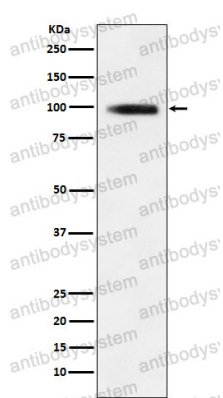
Stability and Storage

Use a manual defrost freezer and avoid repeated freeze thaw cycles. Store at 4 °C for frequent use. Store at -20 °C for twelve months from the date of receipt.

Note

For research use only.

Data Image



Western blot

Western blot analysis of GIT1 expression in 293T cell lysate.