

Anti-SLC17A7 Antibody (R2N60)

Summary

Catalog No.	RHN21303
Clone ID	R2N60
Host species	Rabbit
Tested applications	WB: 1:1000-1:2000
Species reactivity	Human, Mouse, Rat
Form	Liquid
Storage buffer	0.01M PBS, pH 7.4, 0.05% BSA, 50% Glycerol, 0.05% Sodium azide.
Concentration	1 mg/ml
Purity	>95% by SDS-PAGE.
Clonality	Monoclonal
Isotype	IgG
Applications	WB
Target	SLC17A7, Solute carrier family 17 member 7, Vesicular glutamate transporter 1, VGLUT1, VGluT1, BNPI, Brain-specific Na(+)-dependent inorganic phosphate cotransporter
Purification	Protein A/G purified from cell culture supernatant.
Endotoxin level	Please contact with the lab for this information.
Accession	Q9P2U7

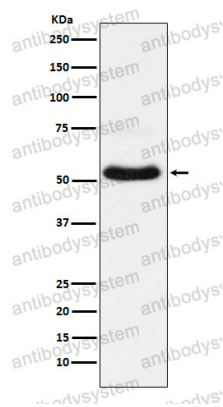
Stability and Storage

Use a manual defrost freezer and avoid repeated freeze thaw cycles. Store at 4 °C for frequent use. Store at -20 °C for twelve months from the date of receipt.

Note

For research use only.

Data Image



Western blot

Western blot analysis of VGlut1 expression in Neuro-2a cell lysate.