

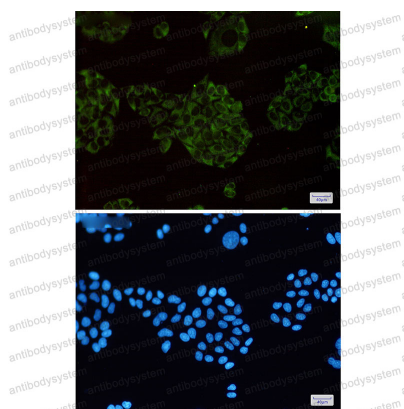
Anti-MAP3K2 Antibody (R2N50)

Summary

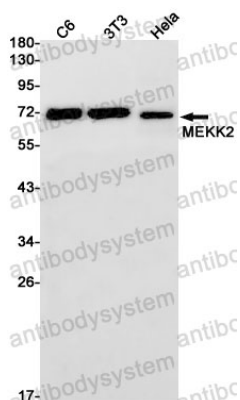
| | |
|------------------------------|---|
| Catalog No. | RHN10702 |
| Clone ID | R2N50 |
| Host species | Rabbit |
| Tested applications | IF: 1:50-1:200, IP: 1:20, WB: 1:500-1:1000 |
| Species reactivity | Human, Mouse, Rat |
| Form | Liquid |
| Storage buffer | 0.01M PBS, pH 7.4, 0.05% BSA, 50% Glycerol, 0.05% Sodium azide. |
| Concentration | 1 mg/ml |
| Purity | >95% by SDS-PAGE. |
| Clonality | Monoclonal |
| Isotype | IgG |
| Applications | IF, IP, WB |
| Target | MEKK2, MEK kinase 2, Mitogen-activated protein kinase kinase 2, MAPK/ERK kinase kinase 2, MAP3K2, MEKK 2, MAPKKK2 |
| Purification | Protein A/G purified from cell culture supernatant. |
| Endotoxin level | Please contact with the lab for this information. |
| Accession | Q9Y2U5 |
| Stability and Storage | Use a manual defrost freezer and avoid repeated freeze thaw cycles. Store at 4 °C for frequent use. Store at -20 °C for twelve months from the date of receipt. |

Note

For research use only.

Data Image**Immunofluorescence**

Immunocytochemistry analysis of MEKK2(green) in Hela using MEKK2 antibody, and DAPI(blue)

**Western blot**

Western blot analysis of MEKK2 in C6, 3T3, Hela lysates using MEKK2 antibody.