

Anti-HLA-C Antibody (R2N38)

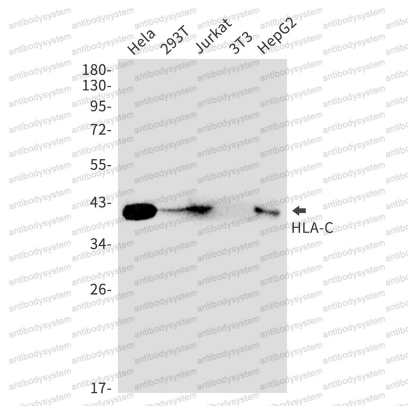
Summary

Catalog No.	RHM00302
Clone ID	R2N38
Host species	Rabbit
Tested applications	IP: 1:20, WB: 1:500-1:1000
Species reactivity	Human, Mouse
Form	Liquid
Storage buffer	0.01M PBS, pH 7.4, 0.05% BSA, 50% Glycerol, 0.05% Sodium azide.
Concentration	1 mg/ml
Purity	>95% by SDS-PAGE.
Clonality	Monoclonal
Isotype	IgG
Applications	IP, WB
Target	HLA-Cw, HLA-C, Human leukocyte antigen C, HLAC, HLA class I histocompatibility antigen, C alpha chain
Purification	Protein A/G purified from cell culture supernatant.
Endotoxin level	Please contact with the lab for this information.
Accession	P10321
Stability and Storage	Use a manual defrost freezer and avoid repeated freeze thaw cycles. Store at 4 °C for frequent use. Store at -20 °C for twelve months from the date of receipt.

Note

For research use only.

Data Image



Western blot

Western blot analysis of HLAC in HeLa, 293T, Jurkat, 3T3, HepG2 lysates using HLA C antibody.