

Anti-P2RY12 Antibody (R2N31)

Summary

Catalog No.	RHK97001
Clone ID	R2N31
Host species	Rabbit
Tested applications	IP: 1:20, WB: 1:500-1:1000
Species reactivity	Human
Form	Liquid
Storage buffer	0.01M PBS, pH 7.4, 0.05% BSA, 50% Glycerol, 0.05% Sodium azide.
Concentration	1 mg/ml
Purity	>95% by SDS-PAGE.
Clonality	Monoclonal
Isotype	IgG
Applications	IP, WB
Target	HORK3, P2T(AC), P2Y(AC), P2Y(cyc), P2Y purinoceptor 12, P2Y(ADP), ADP-glucose receptor, P2RY12, ADPG-R, SP1999, P2Y12, P2Y12 platelet ADP receptor
Purification	Protein A/G purified from cell culture supernatant.
Endotoxin level	Please contact with the lab for this information.
Accession	Q9H244

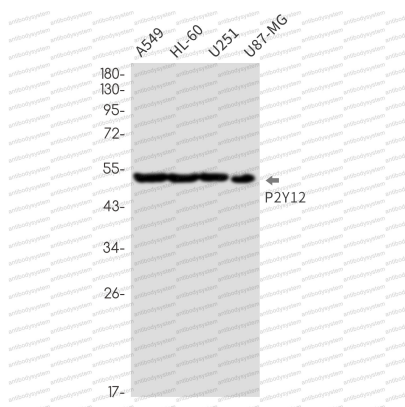
Stability and Storage

Use a manual defrost freezer and avoid repeated freeze thaw cycles. Store at 4 °C for frequent use. Store at -20 °C for twelve months from the date of receipt.

Note

For research use only.

Data Image



Western blot

Western blot analysis of P2Y12 in A549, HL-60, U251, U87-MG lysates using P2Y12 antibody.