

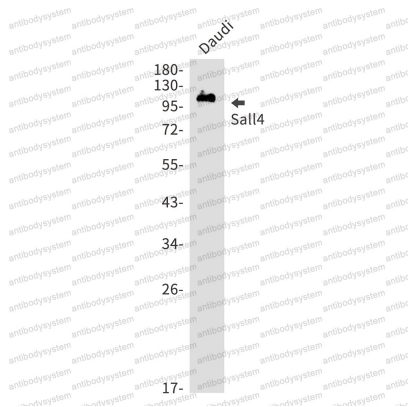
Anti-SALL4 Antibody (R2N20)

Summary

| | |
|------------------------------|---|
| Catalog No. | RHK89101 |
| Clone ID | R2N20 |
| Host species | Rabbit |
| Tested applications | IHC: 1:50-1:100, WB: 1:500-1:1000 |
| Species reactivity | Human |
| Form | Liquid |
| Storage buffer | 0.01M PBS, pH 7.4, 0.05% BSA, 50% Glycerol, 0.05% Sodium azide. |
| Concentration | 1 mg/ml |
| Purity | >95% by SDS-PAGE. |
| Clonality | Monoclonal |
| Isotype | IgG |
| Applications | IHC, WB |
| Target | Sal-like protein 4, SALL4, Zinc finger protein SALL4, Zinc finger protein 797, ZNF797 |
| Purification | Protein A/G purified from cell culture supernatant. |
| Endotoxin level | Please contact with the lab for this information. |
| Accession | Q9UJQ4 |
| Stability and Storage | Use a manual defrost freezer and avoid repeated freeze thaw cycles. Store at 4 °C for frequent use. Store at -20 °C for twelve months from the date of receipt. |

Note For research use only.

Data Image



Western blot

Western blot analysis of Sall4 in Daudi lysates using Sall4 antibody.