

Anti-PHOX2B Antibody (R2N19)

Summary

| | |
|----------------------------|---|
| Catalog No. | RHK88801 |
| Clone ID | R2N19 |
| Host species | Rabbit |
| Tested applications | IF: 1:50-1:200, IHC: 1:100-1:200, WB: 1:1000-1:2000 |
| Species reactivity | Human, Mouse |
| Form | Liquid |
| Storage buffer | 0.01M PBS, pH 7.4, 0.05% BSA, 50% Glycerol, 0.05% Sodium azide. |
| Concentration | 1 mg/ml |
| Purity | >95% by SDS-PAGE. |
| Clonality | Monoclonal |
| Isotype | IgG |
| Applications | IF, IHC, WB |
| Target | PMX2B, PHOX2B homeodomain protein, Paired-like homeobox 2B, Neuroblastoma Phox, Paired mesoderm homeobox protein 2B, NBPhox, PHOX2B |
| Purification | Protein A/G purified from cell culture supernatant. |
| Endotoxin level | Please contact with the lab for this information. |
| Accession | Q99453 |

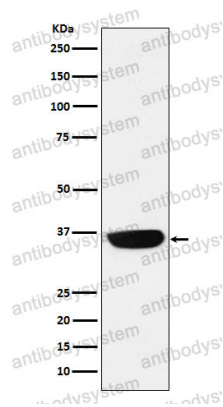
Stability and Storage

Use a manual defrost freezer and avoid repeated freeze thaw cycles. Store at 4 °C for frequent use. Store at -20 °C for twelve months from the date of receipt.

Note

For research use only.

Data Image



Western blot

Western blot analysis of PHOX2B expression in Neuro-2a cell lysate.