

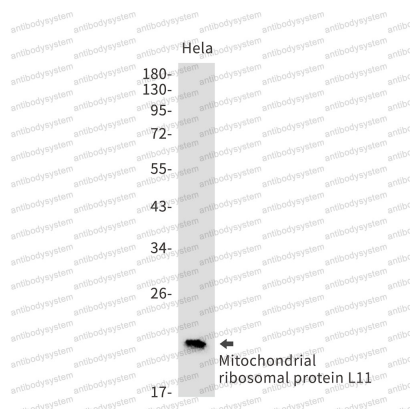
Anti-MRPL11 Antibody (R2N09)

Summary

Catalog No.	RHK76501
Clone ID	R2N09
Host species	Rabbit
Tested applications	IF: 1:50-1:200, IHC: 1:50-1:100, WB: 1:500-1:1000
Species reactivity	Human
Form	Liquid
Storage buffer	0.01M PBS, pH 7.4, 0.05% BSA, 50% Glycerol, 0.05% Sodium azide.
Concentration	1 mg/ml
Purity	>95% by SDS-PAGE.
Clonality	Monoclonal
Isotype	IgG
Applications	IF, IHC, WB
Target	39S ribosomal protein L11, mitochondrial, Mitochondrial large ribosomal subunit protein uL11m, MRPL11, L11mt, MRP-L11
Purification	Protein A/G purified from cell culture supernatant.
Endotoxin level	Please contact with the lab for this information.
Accession	Q9Y3B7
Stability and Storage	Use a manual defrost freezer and avoid repeated freeze thaw cycles. Store at 4 °C for frequent use. Store at -20 °C for twelve months from the date of receipt.

Note

For research use only.

Data Image**Western blot**

Western blot analysis of Mitochondrial ribosomal protein L11 in HeLa lysates using Mitochondrial Ribosomal Protein L11 antibody.