

Anti-ERAP1 Antibody (R2M95)

Summary

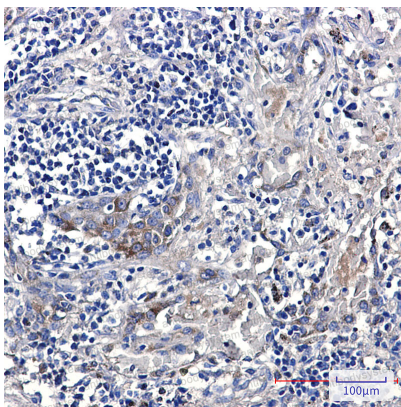
Catalog No.	RHK71201
Clone ID	R2M95
Host species	Rabbit
Tested applications	IHC: 1:50-1:100, WB: 1:500-1:1000
Species reactivity	Human, Rat
Form	Liquid
Storage buffer	0.01M PBS, pH 7.4, 0.05% BSA, 50% Glycerol, 0.05% Sodium azide.
Concentration	1 mg/ml
Purity	>95% by SDS-PAGE.
Clonality	Monoclonal
Isotype	IgG
Applications	IHC, WB
Target	Aminopeptidase PILS, ARTS1, Type 1 tumor necrosis factor receptor shedding aminopeptidase regulator, PILS-AP, Endoplasmic reticulum aminopeptidase 1, ARTS-1, A-LAP, Puromycin-insensitive leucyl-specific aminopeptidase, APPILS, ERAP1, KIAA0525, Adipocyte-derived leucine aminopeptidase
Purification	Protein A/G purified from cell culture supernatant.
Endotoxin level	Please contact with the lab for this information.
Accession	Q9NZ08

Stability and Storage

Use a manual defrost freezer and avoid repeated freeze thaw cycles. Store at 4 °C for frequent use. Store at -20 °C for twelve months from the date of receipt.

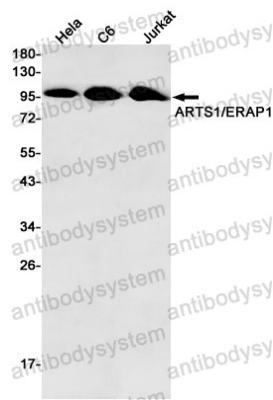
Note

For research use only.

Data Image

Immunohistochemical

Immunohistochemistry analysis of paraffin-embedded Human lung cancer using ARTS1 antibody. High-pressure and temperature Sodium Citrate pH 6.0 was used for antigen retrieval.



Western blot

Western blot analysis of ARTS1/ERAP1 in Hela, C6, Jurkat lysates using ERAP1 antibody.