

# Anti-SMARCD1 Antibody (R2M85)

## Summary

---

<b>Catalog No.</b>	RHK69501
<b>Clone ID</b>	R2M85
<b>Host species</b>	Rabbit
<b>Tested applications</b>	IP: 1:20, WB: 1:500-1:1000
<b>Species reactivity</b>	Human
<b>Form</b>	Liquid
<b>Storage buffer</b>	0.01M PBS, pH 7.4, 0.05% BSA, 50% Glycerol, 0.05% Sodium azide.
<b>Concentration</b>	1 mg/ml
<b>Purity</b>	>95% by SDS-PAGE.
<b>Clonality</b>	Monoclonal
<b>Isotype</b>	IgG
<b>Applications</b>	IP, WB
<b>Target</b>	60 kDa BRG-1/Brm-associated factor subunit A, SWI/SNF-related matrix-associated actin-dependent regulator of chromatin subfamily D member 1, SWI/SNF complex 60 kDa subunit, BAF60A, SMARCD1, BRG1-associated factor 60A
<b>Purification</b>	Protein A/G purified from cell culture supernatant.
<b>Endotoxin level</b>	Please contact with the lab for this information.
<b>Accession</b>	Q96GM5

**Stability and Storage**

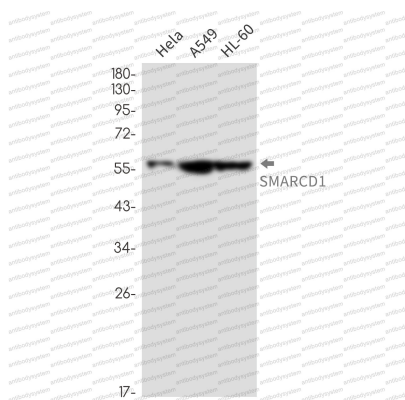
Use a manual defrost freezer and avoid repeated freeze thaw cycles. Store at 4 °C for frequent use. Store at -20 °C for twelve months from the date of receipt.

**Note**

For research use only.

**Data Image**

---



Western blot

Western blot analysis of SMARCD1 in HeLa, A549, HL-60 lysates using SMARCD1 antibody.