

Anti-PRPF8 Antibody (R2M84)

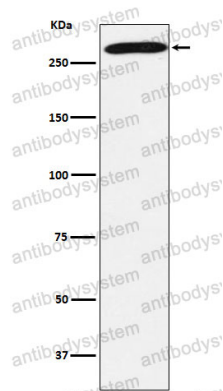
Summary

Catalog No.	RHK69001
Clone ID	R2M84
Host species	Rabbit
Tested applications	FCM: 1:20-1:100, IF: 1:50-1:200, IHC: 1:100-1:200, WB: 1:1000-1:2000
Species reactivity	Human, Mouse, Rat
Form	Liquid
Storage buffer	0.01M PBS, pH 7.4, 0.05% BSA, 50% Glycerol, 0.05% Sodium azide.
Concentration	1 mg/ml
Purity	>95% by SDS-PAGE.
Clonality	Monoclonal
Isotype	IgG
Applications	FCM, IF, IHC, WB
Target	220 kDa U5 snRNP-specific protein, p220, PRPF8, Splicing factor Prp8, PRP8 homolog, Pre-mRNA-processing-splicing factor 8, PRPC8
Purification	Protein A/G purified from cell culture supernatant.
Endotoxin level	Please contact with the lab for this information.
Accession	Q6P2Q9
Stability and Storage	Use a manual defrost freezer and avoid repeated freeze thaw cycles. Store at 4 °C for frequent use. Store at -20 °C for twelve months from the date of receipt.

Note

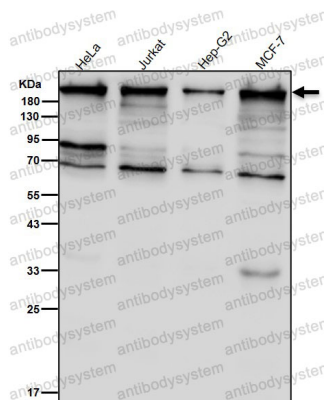
For research use only.

Data Image



Western blot

Western blot analysis of PRPF8 expression in 293T cell lysate.



Western blot

All lanes use the Antibody at 1:2k dilution for 1 hour at room temperature.