

# Anti-DIABLO Antibody (R2M81)

## Summary

---

<b>Catalog No.</b>	RHK68401
<b>Clone ID</b>	R2M81
<b>Host species</b>	Rabbit
<b>Tested applications</b>	IF: 1:50-1:200, IHC: 1:50-1:100, IP: 1:20, WB: 1:500-1:1000
<b>Species reactivity</b>	Human, Mouse, Rat
<b>Form</b>	Liquid
<b>Storage buffer</b>	0.01M PBS, pH 7.4, 0.05% BSA, 50% Glycerol, 0.05% Sodium azide.
<b>Concentration</b>	1 mg/ml
<b>Purity</b>	>95% by SDS-PAGE.
<b>Clonality</b>	Monoclonal
<b>Isotype</b>	IgG
<b>Applications</b>	IF, IHC, IP, WB
<b>Target</b>	Second mitochondria-derived activator of caspase, Diablo homolog, mitochondrial, DIABLO, Smac, SMAC, Direct IAP-binding protein with low pI
<b>Purification</b>	Protein A/G purified from cell culture supernatant.
<b>Endotoxin level</b>	Please contact with the lab for this information.
<b>Accession</b>	Q9NR28

**Stability and Storage**

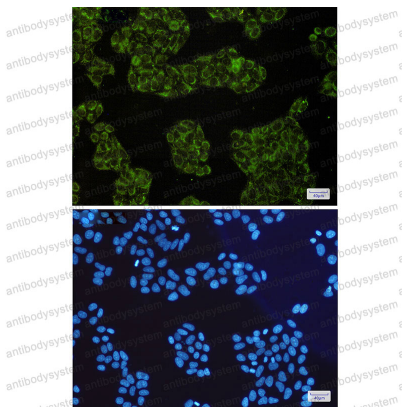
Use a manual defrost freezer and avoid repeated freeze thaw cycles. Store at 4 °C for frequent use. Store at -20 °C for twelve months from the date of receipt.

**Note**

For research use only.

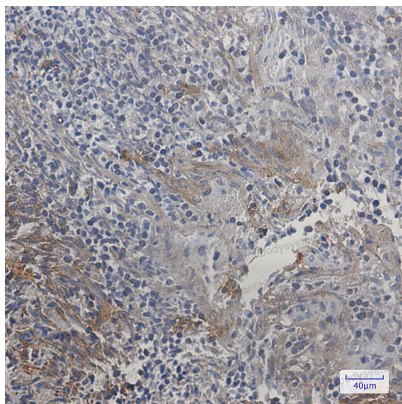
**Data Image**

---



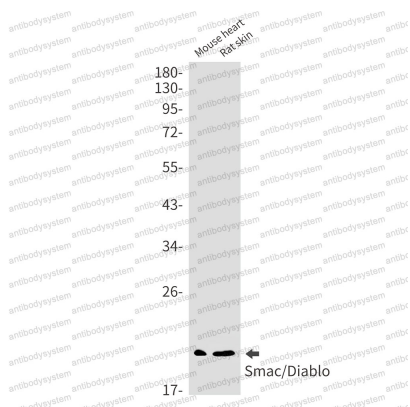
Immunofluorescence

Immunocytochemistry analysis of Smac/Diablo(green) in Hela using Smac/Diablo antibody, and DAPI(blue)



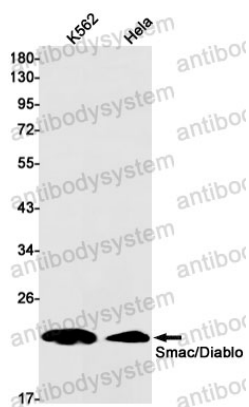
Immunohistochemical

Immunohistochemistry analysis of paraffin-embedded Human tonsil using Smac/Diablo antibody. High-pressure and temperature Sodium Citrate pH 6.0 was used for antigen retrieval.



Western blot

Western blot analysis of Smac/Diablo in mouse heart, rat skin lysates using SMAC antibody.



Western blot

Western blot analysis of Smac/Diablo in K562, Hela lysates using Smac/Diablo antibody.