

Anti-DIABLO Antibody (R2M80)

Summary

Catalog No.	RHK68402
Clone ID	R2M80
Host species	Rabbit
Tested applications	FCM: 1:20-1:100, IF: 1:50-1:200, IHC: 1:100-1:200, IP: 1:20-1:50, WB: 1:1000-1:2000
Species reactivity	Human, Mouse, Rat
Form	Liquid
Storage buffer	0.01M PBS, pH 7.4, 0.05% BSA, 50% Glycerol, 0.05% Sodium azide.
Concentration	1 mg/ml
Purity	>95% by SDS-PAGE.
Clonality	Monoclonal
Isotype	IgG
Applications	FCM, IF, IHC, IP, WB
Target	Second mitochondria-derived activator of caspase, Diablo homolog, mitochondrial, DIABLO, Smac, SMAC, Direct IAP-binding protein with low pI
Purification	Protein A/G purified from cell culture supernatant.
Endotoxin level	Please contact with the lab for this information.
Accession	Q9NR28

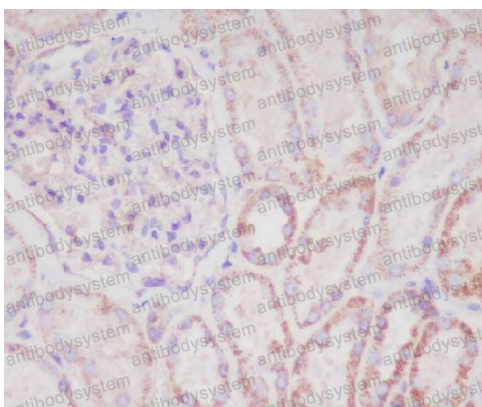
Recombinant Proteins & Antibodies

Stability and Storage

Use a manual defrost freezer and avoid repeated freeze thaw cycles. Store at 4 °C for frequent use. Store at -20 °C for twelve months from the date of receipt.

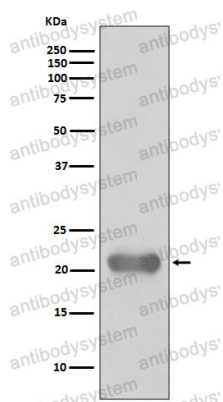
Note

For research use only.

Data Image

Immunohistochemical analysis of paraffin-embedded human kidney, using Smac/Diablo Antibody.

Immunohistochemical



Western blot analysis of Smac/Diablo expression in Jurkat cell lysate.

Western blot