

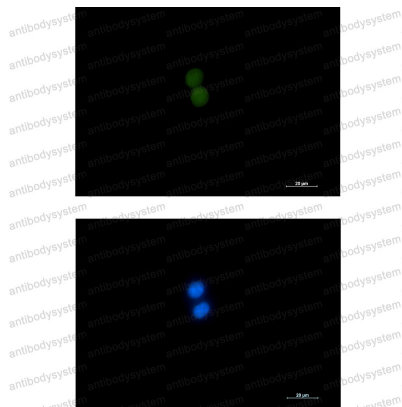
Anti-ASH2L Antibody (R2M72)

Summary

Catalog No.	RHK65802
Clone ID	R2M72
Host species	Rabbit
Tested applications	IF: 1:50-1:200, IP: 1:20, WB: 1:500-1:1000
Species reactivity	Human, Rat
Form	Liquid
Storage buffer	0.01M PBS, pH 7.4, 0.05% BSA, 50% Glycerol, 0.05% Sodium azide.
Concentration	1 mg/ml
Purity	>95% by SDS-PAGE.
Clonality	Monoclonal
Isotype	IgG
Applications	IF, IP, WB
Target	ASH2L, ASH2-like protein, Set1/Ash2 histone methyltransferase complex subunit ASH2, ASH2L1
Purification	Protein A/G purified from cell culture supernatant.
Endotoxin level	Please contact with the lab for this information.
Accession	Q9UBL3
Stability and Storage	Use a manual defrost freezer and avoid repeated freeze thaw cycles. Store at 4 °C for frequent use. Store at -20 °C for twelve months from the date of receipt.

Note

For research use only.

Data Image**Immunofluorescence**

Immunocytochemistry analysis of ASH2L (green) in K562 using ASH2L antibody, and DAPI (blue).

**Western blot**

Western blot analysis of ASH2L in K562, C6 lysates using ASH2L antibody.