

Anti-MAD1L1 Antibody (R2M64)

Summary

| | |
|----------------------------|--|
| Catalog No. | RHK63201 |
| Clone ID | R2M64 |
| Host species | Rabbit |
| Tested applications | WB: 1:1000-1:2000 |
| Species reactivity | Human, Mouse, Rat |
| Form | Liquid |
| Storage buffer | 0.01M PBS, pH 7.4, 0.05% BSA, 50% Glycerol, 0.05% Sodium azide. |
| Concentration | 1 mg/ml |
| Purity | >95% by SDS-PAGE. |
| Clonality | Monoclonal |
| Isotype | IgG |
| Applications | WB |
| Target | HsMAD1, MAD1-like protein 1, hMAD1, Mitotic arrest deficient 1-like protein 1, Tax-binding protein 181, MAD1, TXBP181, Mitotic checkpoint MAD1 protein homolog, MAD1L1, Mitotic spindle assembly checkpoint protein MAD1 |
| Purification | Protein A/G purified from cell culture supernatant. |
| Endotoxin level | Please contact with the lab for this information. |
| Accession | Q9Y6D9 |

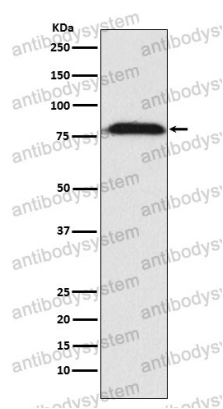
Stability and Storage

Use a manual defrost freezer and avoid repeated freeze thaw cycles. Store at 4 °C for frequent use. Store at -20 °C for twelve months from the date of receipt.

Note

For research use only.

Data Image



Western blot

Western blot analysis of MAD1 expression in A431 cell lysate.