

Anti-SMARCC1/BAF155 Antibody (R2M56)

Summary

Catalog No.	RHK59002
Clone ID	R2M56
Host species	Rabbit
Tested applications	FCM: 1:20-1:100, IF: 1:50-1:200, IP: 1:20-1:50, WB: 1:1000-1:2000
Species reactivity	Human, Rat
Form	Liquid
Storage buffer	0.01M PBS, pH 7.4, 0.05% BSA, 50% Glycerol, 0.05% Sodium azide.
Concentration	1 mg/ml
Purity	>95% by SDS-PAGE.
Clonality	Monoclonal
Isotype	IgG
Applications	FCM, IF, IP, WB
Target	SWI/SNF-related matrix-associated actin-dependent regulator of chromatin subfamily C member 1, SWI/SNF complex subunit SMARCC1, BAF155, SMARCC1, BRG1-associated factor 155, SWI/SNF complex 155 kDa subunit
Purification	Protein A/G purified from cell culture supernatant.
Endotoxin level	Please contact with the lab for this information.
Accession	Q92922

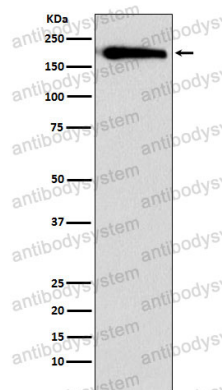
Stability and Storage

Use a manual defrost freezer and avoid repeated freeze thaw cycles. Store at 4 °C for frequent use. Store at -20 °C for twelve months from the date of receipt.

Note

For research use only.

Data Image



Western blot

Western blot analysis of SMARCC1 expression in HeLa cell lysate.