

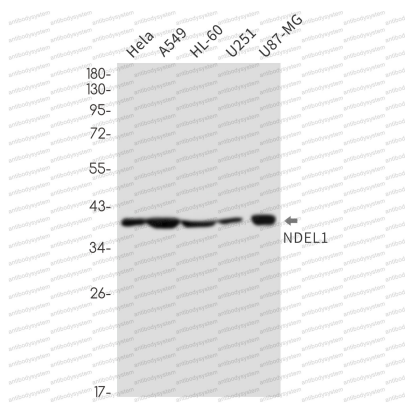
Anti-NDEL1 Antibody (R2M49)

Summary

Catalog No.	RHK55401
Clone ID	R2M49
Host species	Rabbit
Tested applications	WB: 1:500-1:1000
Species reactivity	Human, Mouse
Form	Liquid
Storage buffer	0.01M PBS, pH 7.4, 0.05% BSA, 50% Glycerol, 0.05% Sodium azide.
Concentration	1 mg/ml
Purity	>95% by SDS-PAGE.
Clonality	Monoclonal
Isotype	IgG
Applications	WB
Target	Protein Nudel, EOPA, Nuclear distribution protein nudE-like 1, NUDEL, MITAP1, NDEL1, Mitosin-associated protein 1
Purification	Protein A/G purified from cell culture supernatant.
Endotoxin level	Please contact with the lab for this information.
Accession	Q9GZM8
Stability and Storage	Use a manual defrost freezer and avoid repeated freeze thaw cycles. Store at 4 °C for frequent use. Store at -20 °C for twelve months from the date of receipt.

Note

For research use only.

Data Image

Western blot

Western blot analysis of NDEL1 in HeLa, A549, HL-60, U251, U87-MG lysates using NDEL1 antibody.