

Anti-GTPBP4 Antibody (R2M39)

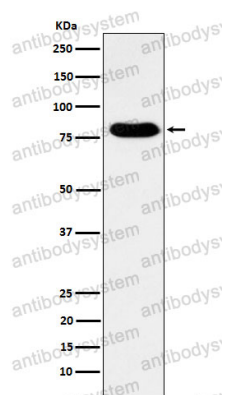
Summary

Catalog No.	RHK53402
Clone ID	R2M39
Host species	Rabbit
Tested applications	FCM: 1:20-1:100, IHC: 1:100-1:200, IP: 1:20-1:50, WB: 1:1000-1:2000
Species reactivity	Human
Form	Liquid
Storage buffer	0.01M PBS, pH 7.4, 0.05% BSA, 50% Glycerol, 0.05% Sodium azide.
Concentration	1 mg/ml
Purity	>95% by SDS-PAGE.
Clonality	Monoclonal
Isotype	IgG
Applications	FCM, IHC, IP, WB
Target	Chronic renal failure gene protein, NOG1, CRFG, Nucleolar GTP-binding protein 1, GTPBP4, GTP-binding protein NGB
Purification	Protein A/G purified from cell culture supernatant.
Endotoxin level	Please contact with the lab for this information.
Accession	Q9BZE4
Stability and Storage	Use a manual defrost freezer and avoid repeated freeze thaw cycles. Store at 4 °C for frequent use. Store at -20 °C for twelve months from the date of receipt.

Note

For research use only.

Data Image



Western blot

Western blot analysis of GTPBP4 expression in Human fetal kidney lysate.