

Anti-ITCH Antibody (R2M16)

Summary

Catalog No.	RHK44903
Clone ID	R2M16
Host species	Rabbit
Tested applications	IHC: 1:100-1:200, WB: 1:1000-1:2000
Species reactivity	Human, Mouse, Rat
Form	Liquid
Storage buffer	0.01M PBS, pH 7.4, 0.05% BSA, 50% Glycerol, 0.05% Sodium azide.
Concentration	1 mg/ml
Purity	>95% by SDS-PAGE.
Clonality	Monoclonal
Isotype	IgG
Applications	IHC, WB
Target	Atrophin-1-interacting protein 4, HECT-type E3 ubiquitin transferase Itchy homolog, NFE2-associated polypeptide 1, NAPP1, E3 ubiquitin-protein ligase Itchy homolog, ITCH, Itch, AIP4
Purification	Protein A/G purified from cell culture supernatant.
Endotoxin level	Please contact with the lab for this information.
Accession	Q96J02

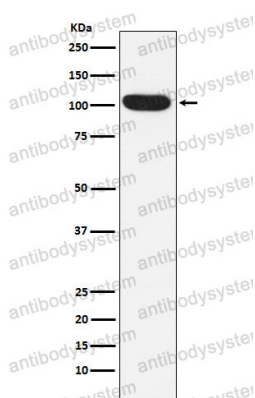
Stability and Storage

Use a manual defrost freezer and avoid repeated freeze thaw cycles. Store at 4 °C for frequent use. Store at -20 °C for twelve months from the date of receipt.

Note

For research use only.

Data Image



Western blot

Western blot analysis of ITCH/AIP4 expression in K562 cell lysate.