

Anti-MAD2L2 Antibody (R2M14)

Summary

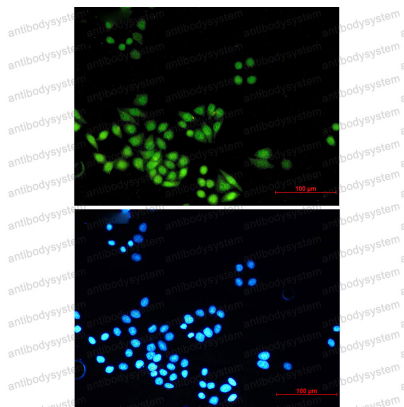
Catalog No.	RHK44601
Clone ID	R2M14
Host species	Rabbit
Tested applications	IF: 1:50-1:200, IP: 1:20, WB: 1:500-1:1000
Species reactivity	Human
Form	Liquid
Storage buffer	0.01M PBS, pH 7.4, 0.05% BSA, 50% Glycerol, 0.05% Sodium azide.
Concentration	1 mg/ml
Purity	>95% by SDS-PAGE.
Clonality	Monoclonal
Isotype	IgG
Applications	IF, IP, WB
Target	Mitotic arrest deficient 2-like protein 2, Mitotic spindle assembly checkpoint protein MAD2B, MAD2L2, MAD2-like protein 2, hREV7, REV7, REV7 homolog, MAD2B
Purification	Protein A/G purified from cell culture supernatant.
Endotoxin level	Please contact with the lab for this information.
Accession	Q9UI95

Stability and Storage

Use a manual defrost freezer and avoid repeated freeze thaw cycles. Store at 4 °C for frequent use. Store at -20 °C for twelve months from the date of receipt.

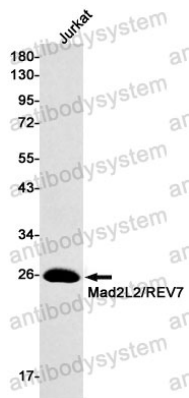
Note

For research use only.

Data Image

Immunofluorescence

Immunocytochemistry analysis of Mad2L2/REV7 (green) in HeLa using Mad2L2/REV7 antibody, and DAPI (blue)



Western blot

Western blot analysis of Mad2L2/REV7 in Jurkat lysates using MAD2L2 antibody.