

Anti-Phospho-CDC6 (Ser106) Antibody (R2M11)

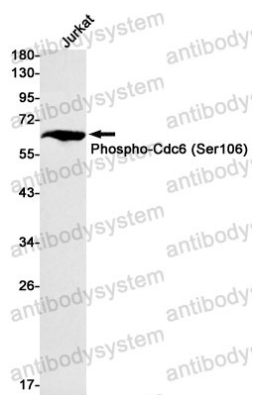
Summary

Catalog No.	RHK44101
Clone ID	R2M11
Host species	Rabbit
Tested applications	WB: 1:500-1:1000
Species reactivity	Human, Rat
Form	Liquid
Storage buffer	0.01M PBS, pH 7.4, 0.05% BSA, 50% Glycerol, 0.05% Sodium azide.
Concentration	1 mg/ml
Purity	>95% by SDS-PAGE.
Clonality	Monoclonal
Isotype	IgG
Applications	WB
Target	HsCdc18, CDC18L, CDC6, HsCDC6, CDC6-related protein, Cell division control protein 6 homolog, p62(cdc6), Cdc18-related protein
Purification	Protein A/G purified from cell culture supernatant.
Endotoxin level	Please contact with the lab for this information.
Accession	Q99741
Stability and Storage	Use a manual defrost freezer and avoid repeated freeze thaw cycles. Store at 4 °C for frequent use. Store at -20 °C for twelve months from the date of receipt.

Note

For research use only.

Data Image



Western blot

Western blot analysis of Phospho-Cdc6 (Ser106) in Jurkat lysates using Phospho-CDC6 (Ser106) antibody.